

DOOR CONTROL

SECURITY & SPECIALTY HARDWARE

REMOVABLE DOOR MULLION

M418NF, M424FR



TOP
BRACKET



BOTTOM
BRACKET

- Removable steel door mullion for use on standard or fire rated pairs of doors
- Provides a solid and secure center point for latching double doors
- Requires wide stile doors with a minimum width of 3¼" (82.5 mm)
- 2 x 3" (50.8 x 76 mm) steel tube, ⅛" (3mm) gauge for heavy duty use
- Can accommodate door frames up to 96" (2438 mm) high
- Lockable, removable or fixed
- Accepts standard rim cylinder and includes cylinder mounting hardware (not included)
- Cast steel top and bottom brackets included
- Painted aluminum finish
- Mounting hardware included: machine screws and floor anchors
- #M418NF for standard paired doors up to 96" (2438 mm) high
- #M424FR UL Listed for fire rated paired doors up to 96" (2438 mm) high and includes longer floor anchors

M418NF
MODEL

GRAVITY DOOR COORDINATOR

DCG7, DCG9



- UL listed for fire doors, conforms to ANSI/BHMA 156.3 type 21
- For use on paired doors with astragal up to 4" (102 mm) to allow inactive door to close before active door
- Non-handed
- Surface mounted
- Solid brass, satin chrome finish
- Nylon and rubber rollers and strike plate provide quiet and efficient operation and help protect the doors from damage
- Mounting hardware included: machine screws

DCG9	-26D
MODEL	FINISH

MODEL	USAGE
DCG7	Use with paired doors with an active door size (with astragal) ≤ 48" (1290 mm) wide OR paired doors with an inactive door (with astragal) ≤ 40" (1016 mm) wide OR paired doors both with astragals ≤ 34" (864 mm) wide
DCG9	Use with paired doors with active door size (with astragal) > 48" (1290 mm) wide OR paired doors with inactive door with astragal > 40" (1016 mm) wide OR paired doors both with astragals > 34" (864 mm) wide

DOOR CONTROL

SECURITY & SPECIALTY HARDWARE

DOOR COORDINATOR – SURFACE MOUNTED

DCM, DCFB, DCMB



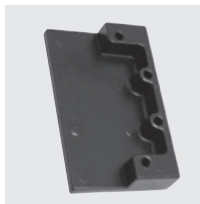
- UL listed fire door coordinator
- Use on paired doors (with or without astragal) to allow inactive door to close before active door
- Non-handed
- Surface mounted
- Aluminum extrusion with steel components
- Active door holding lever with adjustable tension
- Mounting hardware included: machine screws
- Anodized aluminum finish (28)
- Filler bars – available
- Mounting brackets for other components – available

DCSM	42	28
MODEL	SIZE	FINISH

SIZE	LENGTH	USAGE
32	32 (813)	For openings 34–52" (864–1320 mm) or a pair of 24" (610 mm) doors
42	42 (1067)	For openings 52–72" (1320–1829 mm) or a pair of 30" (762 mm) doors
52	52 (1320)	For openings 62–92" (1575–2337 mm) or a pair of 36" (914 mm) doors
60	60 (1524)	For openings 70–108" (1778–2743 mm) or a pair of 42" (1067 mm) doors

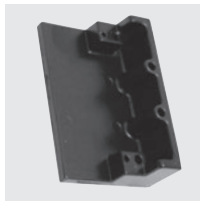
IN (MM)

MOUNTING BRACKETS



DCMB4250-BLK

- Allows other components to be installed over door coordinator
- Use with door frames with a door stop height of $\frac{5}{8}$ " (16 mm) and a minimum door stop width of $2\frac{1}{2}$ " (64 mm)
- Sold individually



DCMB4750-BLK

- Allows other components to be installed over door coordinator
- Use with door frames with a door stop height of $\frac{5}{8}$ " (16 mm) and a door stop width between $\frac{7}{8}$ – $2\frac{1}{4}$ " (22–57 mm)
- Sold individually

FILLER BARS



DCFB

- DCSM coordinators do not always cover entire length of door stop. Filler bars are used maintain a clean aesthetic look.
- Aluminum extrusion, anodized finish (28)

ITEM	DIMENSIONS*
DCFB18-28	18 x $1\frac{5}{8}$ x $\frac{5}{8}$ (457 x 41 x 16)
DCFB32-28	32 x $1\frac{5}{8}$ x $\frac{5}{8}$ (813 x 41 x 16)
DCFB42-28	42 x $1\frac{5}{8}$ x $\frac{5}{8}$ (1067 x 41 x 16)

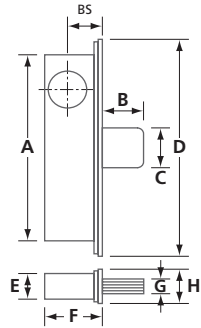
IN (MM) (*) LENGTH X WIDTH X HEIGHT

SWINGING DOOR HARDWARE

SECURITY & SPECIALTY HARDWARE

DOREX DB2100 DEADBOLT LOCK

DB21



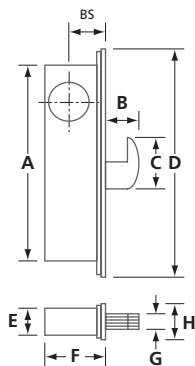
- Heavy zinc plated steel construction
- 5-ply laminated steel pivot bolt with 3 case-hardened center plies plus hardened roll pin (sawing test meets ANSI performance specifications)
- 1 3/8" (35.1 mm) bolt throw
- Non-handed
- Cylinder backset: 7/8" (22.2 mm), 31/32" (24.6 mm) or 1 1/8" (28.6 mm)
- Lock accepts standard 1 5/32" (29.4 mm) diameter mortise cylinder with cam A (Adams Rite type)
- Flat anodized aluminum (#FP11) faceplate included
- Other faceplates available, see page 3

MODEL	FINISH	BS	A	B	C	D	E	F	G	H	/CASE
DB2101-1	AL	7/8 (22.2)	6 (152.7)	1 3/8 (35.1)	1 3/8 (34.4)	6 7/8 (174.6)	29/32 (22.8)	1 19/32 (40.0)	5/8 (15.3)	1 (25.4)	25
DB2102-1	AL	31/32 (24.6)	6 (152.7)	1 3/8 (35.1)	1 3/8 (34.4)	6 7/8 (174.6)	29/32 (22.8)	1 5/8 (41.2)	5/8 (15.3)	1 (25.4)	25
DB2103-1	AL, DU	1 1/8 (28.6)	6 (152.7)	1 3/8 (35.1)	1 3/8 (34.4)	6 7/8 (174.6)	29/32 (22.8)	1 25/32 (45.1)	5/8 (15.3)	1 (25.4)	25

IN (MM) AL: ALUMINUM DU: DARK BRONZE

DOREX HB2300 HOOKBOLT LOCK

HB23



- Heavy zinc plated steel construction
- 5-ply laminated steel pivot bolt with 3 case-hardened center plies plus hardened roll pin (sawing test meets ANSI performance specifications)
- 1 3/16" (20.5 mm) bolt throw
- Non-handed
- Cylinder backset: 31/32" (24.6 mm) or 1 1/8" (28.6 mm)
- Lock accepts standard 1 5/32" (29.4 mm) diameter mortise cylinder with cam A (Adams Rite type)
- Flat anodized aluminum (#FP21) faceplate included
- Other faceplates available, see page 3

MODEL	FINISH	BS	A	B	C	D	E	F	G	H	/CASE
HB2302-1	AL, DU	31/32 (24.6)	6 (152.7)	17/32 (13.4)	1 1/4 (31.8)	6 7/8 (174.6)	29/32 (22.9)	1 5/8 (41.4)	5/8 (15.3)	1 (25.4)	25
HB2303-1	AL, DU	1 1/8 (28.6)	6 (152.7)	17/32 (13.4)	1 1/4 (31.8)	6 7/8 (174.6)	29/32 (22.9)	1 25/32 (45.1)	5/8 (15.3)	1 (25.4)	25

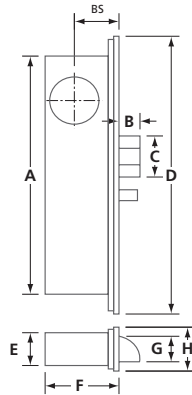
IN (MM) AL: ALUMINUM DU: DARK BRONZE

SWINGING DOOR HARDWARE

SECURITY & SPECIALTY HARDWARE

DOREX DL2400 DEADLATCH LOCK

DL24



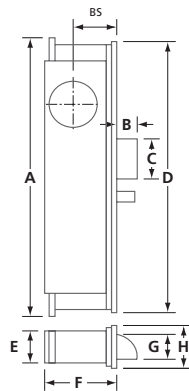
- Heavy zinc plated steel construction
- Chrome plated latch bolt with Delrin insert for smooth, quiet latching
- 1/2" (12.7 mm) latch throw
- Zinc alloy dead locking pin
- Left or right handed, field reversible
- Cylinder backset: 3 1/32" (24.6 mm) or 1 1/8" (28.6 mm)
- Lock accepts standard 1 5/32" (29.4 mm) diameter mortise cylinder with cam A (Adams Rite type)
- Key or turn-button controlled latch dogging
- Radius anodized aluminum (#FP32) faceplate included
- Other faceplates available, see page 3

MODEL	FINISH	HANDING	BS	A	B	C	D	E	F	G	H	/CASE
DL2412-2	AL, DU	LEFT	3 1/32 (24.6)	5 27/32 (148.1)	1/2 (12.7)	1 (25.3)	6 7/8 (174.6)	7/8 (22.2)	1 19/32 (40.6)	5/8 (16.2)	1 (25.4)	25
DL2422-2	AL, DU	RIGHT										
DL2413-2	AL, DU	LEFT	1 1/8 (28.6)	5 27/32 (148.1)	1/2 (12.7)	1 (25.3)	6 7/8 (174.6)	7/8 (22.2)	1 19/32 (40.6)	5/8 (16.2)	1 (25.4)	25
DL2423-2	AL, DU	RIGHT										

IN (MM) AL: ALUMINUM DU: DARK BRONZE

DOREX DL2500 DEADLATCH LOCK – HEAVY DUTY

DL25



- Heavy zinc plated steel construction
- Adjustable mounting studs for easy lock alignment
- Solid zinc alloy latch bolt with 1/2" (12.7 mm) throw
- Zinc alloy dead locking pin
- Left or right handed, field reversible
- Cylinder backset: 3 1/32" (24.6 mm) or 1 1/8" (28.6 mm)
- Lock accepts standard 1 5/32" (29.4 mm) diameter mortise cylinder with cam A (Adams Rite type)
- Key or turn-button controlled latch dogging
- Radius anodized aluminum (#FP32) faceplate included
- Other faceplates available, see page 3

MODEL	FINISH	HANDING	BS	A	B	C	D	E	F	G	H	/CASE
DL2512-2	AL	LEFT	3 1/32 (24.6)	7 (177.8)	1/2 (12.7)	1 (25.4)	6 7/8 (174.6)	7/8 (22.5)	1 5/8 (41.2)	5/8 (15.7)	1 (25.4)	25
DL2522-2	AL	RIGHT										
DL2513-2	AL	LEFT	1 1/8 (28.6)	7 (177.8)	1/2 (12.7)	1 (25.4)	6 7/8 (174.6)	7/8 (22.5)	1 5/8 (41.2)	5/8 (15.7)	1 (25.4)	25
DL2523-2	AL, DU	RIGHT										

N (MM) AL: ALUMINUM DU: DARK BRONZE

SWINGING DOOR HARDWARE

SECURITY & SPECIALTY HARDWARE

DOREX MORTISE LOCK FACEPLATES



STILE	FORM	DESCRIPTION	SERIES	MODEL	FINISH	/CASE
		Flat 6 $\frac{7}{8}$ "x1 (174.6x25.4)	DB	FP11	AL DU	25
			HB	FP21		
			DL	FP31		
		Bevelled, left hand 6 $\frac{7}{8}$ "x1 (174.6x25.4)	DB	FP13	AL DU	25
			HB	FP23		
			DL	FP33		
		Bevelled, right hand 6 $\frac{7}{8}$ "x1 (174.6x25.4)	DB	FP14	AL DU	25
			HB	FP24		
			DL	FP34		
		Radius 6 $\frac{7}{8}$ "x1 (174.6x25.4)	DB	FP12	AL DU	25
			HB	FP22		
			DL	FP32		
		Radius, weatherstrip, left hand 6 $\frac{7}{8}$ "x1 (174.6x25.4)	DB	FP15	AL DU	25
			HB	FP25		
			DL	FP35		
		Radius, weatherstrip, right hand 6 $\frac{7}{8}$ "x1 (174.6x25.4)	DB	FP16	AL DU	25
			HB	FP26		
			DL	FP36		

IN (MM)

AL: ALUMINUM DU: DARK BRONZE

ALL FACEPLATES ARE ANODIZED ALUMINUM

DOREX VARIOUS ACCESSORIES



LS01 DL STRIKE

- Standard flat stainless steel deadlatch strike
- Includes dustbox, mounting plate and machine screws

LS02 DL STRIKE

- Flat reversible stainless steel deadlatch strike (used when converting to DL series from door prepped for DB or HB series)
- Includes black plastic dust box, steel mounting plate and machine screws

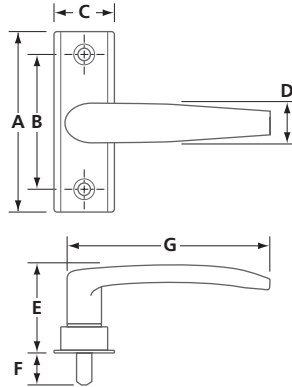
SWINGING DOOR HARDWARE

SECURITY & SPECIALTY HARDWARE

DOREX LEVER HANDLE



RIGHT HAND (RH)
HANDLE SHOWN



- Lever handle with cam for DL2000 series deadlatch, to be used on 1³/₄" (44 mm) thick aluminum doors
- Left hand or right hand, field reversible
- Sturdy and dependable aluminum alloy construction
- Hardened steel spindle and cam
- 3" (76 mm) center to center mounting holes
- Cam (#0112PLUGLH / RH) included but also sold separately

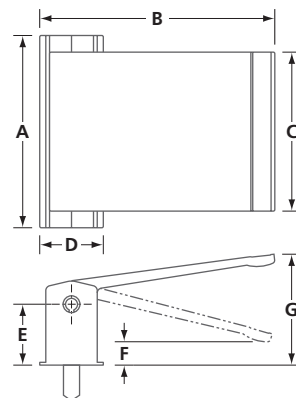
#0112RH for Left Hand Reverse (LHR) or right hand (RH) outswing doors
#0112LH for Right Hand Reverse (RHR) or left hand (LH) outswing doors

For LH handle in Left Hand Reversed use #0112PLUGRH
For RH handle in Right Hand Reversed use #0112PLUGLH

MODEL	HAND	FINISH	A	B	C	D	E	F	G	/CASE
0112	LH, RH	20D, 28	4 (101.5)	3 (76.0)	1 ¹¹ / ₃₂ (34.0)	⁷ / ₈ (22.4)	1 ¹⁵ / ₁₆ (48.8)	²³ / ₃₂ (18.0)	3 ³ / ₄ (95.1)	50

IN (MM) LH: LEFT HAND, RH: RIGHT HAND 20D: DARK BRONZE 28: ALUMINUM

DOREX PUSH/PULL PADDLE



- PUSH / PULL paddle with cam for DL2000 series deadlatch
- Left hand or right hand, field reversible
- Zinc alloy base
- Extruded and anodized aluminum paddle
- 3" (76.2 mm) center to center concealed mounting holes
- Spring (#5590S) and extension kit (#5590SPK) for 2¹/₄" (57.2 mm) door thickness are available
- Cam (0112PLUGLH / RH) included but also sold separately

#5590*R for Left Hand Reverse (LHR) or right hand (RH) outswing doors
#5590*L for Right Hand Reverse (RHR) or left hand (LH) outswing doors

For LH handle in Left Hand Reversed use #0112PLUGRH
For RH handle in Right Hand Reversed use #0112PLUGLH

MODEL	FINISH	HAND	A	B	C	D	E	F	G	/CASE
5590	20D, 28	L, R	4 ¹ / ₃₂ (102.8)	4 ¹⁵ / ₁₆ (125.7)	3 ¹¹ / ₃₂ (85.0)	1 ¹¹ / ₃₂ (34.0)	1 ⁵ / ₁₆ (33.0)	⁹ / ₁₆ (14.0)	2 ³ / ₈ (60.0)	20

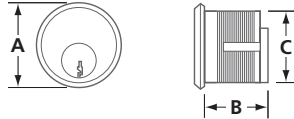
IN (MM) L: LEFT HAND, R: RIGHT HAND 20D: DARK BRONZE 28: ALUMINUM

LOCK CYLINDERS

SECURITY & SPECIALTY HARDWARE

MORTISE CYLINDERS – BRASS

CBM



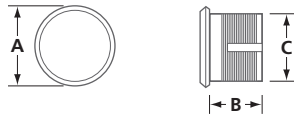
KEY CYLINDER

- Solid brass construction with aluminum clad face
- 5-pin, or 5-pin drilled for 6-pin
- Trim ring included
- Keyways: Schlage (SC), Yale #9 (Y9) or Weiser (WR)
- Includes 2 keys
- Cams: Adams Rite type (cam A) or Yale type (cam B)

CBM	118	A	-	SC	KD	-	28
MODEL	LENGTH	CAM	KEY	KEYING	FINISH		

MODEL	LENGTH	∅A	B	∅C	CAM	KEYWAY	KEYING	PINS	FINISH	/CASE
CBM	100	1 ³ / ₈ (35)	1 (25.4)	1 ⁵ / ₃₂ (29.1)	A, B	SC, Y9, WR	KA, K2, KD	5	20D, 26D, 28	100
CBM	118	1 ³ / ₈ (35)	1 ¹ / ₈ (29)	1 ⁵ / ₃₂ (29.1)	A, B	SC, Y9, WR	KA, K2, KD	5*	20D, 28	100
CBM	114	1 ³ / ₈ (35)	1 ¹ / ₄ (32)	1 ⁵ / ₃₂ (29.1)	A, B	SC, Y9, WR	KA, K2, K3, KD	5*	20D, 28	100

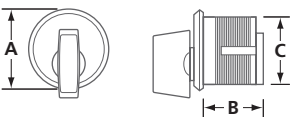
IN (MM) (*) 5-PIN CYLINDER, DRILLED 6 20D: DARK BRONZE 28: ALUMINUM
KA: KEYED ALIKE K2: KEYED ALIKE, PAIRED CYLINDERS, 50 PAIRS PER CASE KD: KEYED DIFFERENT



DUMMY CYLINDER

- Solid brass construction with aluminum clad face
- Trim ring included

CBM	100	-	DM	-	28
MODEL	LENGTH	TYPE	FINISH		



THUMB-TURN CYLINDER

- Solid brass construction with aluminum clad face
- Trim ring included
- Cams: Adams Rite type (cam A) or Yale type (cam B)

CBM	100	A	-	T1	-	28
MODEL	LENGTH	CAM	TYPE	FINISH		

MODEL	LENGTH	∅A	B	∅C	CAM*	TYPE	FINISH	/CASE
CBM	100	1 ³ / ₈ (35)	1 (25.4)	1 ⁵ / ₃₂ (29.1)	A, B	DM, T1	20D, 28	100

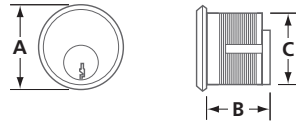
IN (MM) (*) LEAVE BLANK WHEN ORDERING DUMMY CYLINDER 20D: DARK BRONZE 28: ALUMINUM

LOCK CYLINDERS

SECURITY & SPECIALTY HARDWARE

MORTISE CYLINDERS – ZINC

CZM



KEY CYLINDER

- Solid zinc construction with aluminum clad face
- 5-pin cylinder
- Trim ring included
- Keyways: Schlage (SC), Yale #9 (Y9) or Weiser (WR)
- Includes 2 keys
- Cams: Adams Rite type (cam A) or Yale type (cam B)

CZM	100	A	-	SC	KD	-	28
MODEL	LENGTH	CAM	KEY	KEYING	FINISH		

MODEL	LENGTH	∅A	B	∅C	CAM	KEYWAY	KEYING	PINS	FINISH	/CASE
CZM	100	1 ³ / ₈ (35)	1 (25.4)	1 ⁵ / ₃₂ (29.1)	A, B	SC, Y9	KA, KA2, KD	5	20D, 28	100

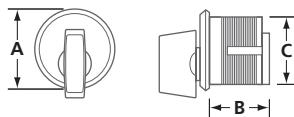
IN (MM) 20D: DARK BRONZE 28: ALUMINUM
KA: KEYED ALIKE K2: KEYED ALIKE, PAIRED CYLINDERS, 50 PAIRS PER CASE KD: KEYED DIFFERENT



DUMMY CYLINDER

- Solid zinc construction with aluminum clad face
- Trim ring included

CZM	100	-	DM	-	28
MODEL	LENGTH	TYPE	FINISH		



THUMB-TURN CYLINDER

- Solid zinc construction with aluminum clad face
- Trim ring included
- Cams: Adams Rite type (cam A) or Yale type (cam B)

CZM	100	A	-	T1	-	28
MODEL	LENGTH	CAM	TYPE	FINISH		

MODEL	LENGTH	∅A	B	∅C	CAM*	TYPE	FINISH	/CASE
CZM	100	1 ³ / ₈ (35)	1 (25.4)	1 ⁵ / ₃₂ (29.1)	A, B	DM, T1	20D, 28	100

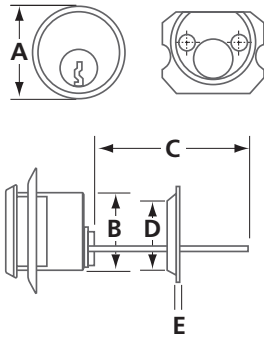
IN (MM) (*) LEAVE BLANK WHEN ORDERING DUMMY CYLINDER 20D: DARK BRONZE 28: ALUMINUM

LOCK CYLINDERS

SECURITY & SPECIALTY HARDWARE

RIM CYLINDER

CBR



- Solid brass with aluminum clad face, trim ring included
- Cylinder length: 114 = 1 1/4" (32 mm)
- Keyways: Schlage (SC), Yale #9 (Y9) or Weiser (WR)
- 2 keys included
- Standard tailpiece and mounting hardware

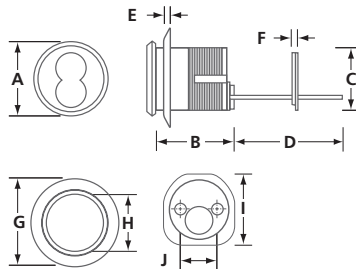
CBR	114	-	Y9	KD	-	26D
MODEL	LENGTH	KEY	KEYING	FINISH		

MODEL	øA	øB	C	D	E
CBR	1 3/8 (34.5)	1 5/32 (29.1)	2 7/16 (62)	1 1/4 (32)	1/16 (1.6)

IN (MM) 26D: SATIN CHROME

MORTISE/RIM COMBO SFIC CYLINDER HOUSING

9807H



- Solid brass housing for "BEST" small format interchangeable core 7-pin cylinder
- Can be used as a mortise cylinder (Schlage cam) or as a rim cylinder with floating tail piece

9807H	-	26D
MODEL	FINISH	

MODEL	øA	B	øC	D	E	F	øG	H	I	J
9807H	1 5/16 (33.3)	1 15/32 (37.2)	1 5/32 (29.4)	1 5/16 (33.3)	1/4 (6.4)	3/16 (4.8)	1 5/8 (41.3)	1 5/32 (29.4)	1 9/16 (39.7)	2 7/32 (21.0)

IN (MM)

MODEL	LENGTH	CAM	TAIL PIECE	KEYING	FINISH	/CASE
9807H	1 3/8 (35)	Schlage	Floating	—	26D	10

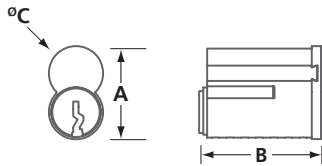
IN (MM) 26D: SATIN CHROME

LOCK CYLINDERS

SECURITY & SPECIALTY HARDWARE

BEST® F-TYPE SFIC CORE

CBI



- Solid brass 7 pin small format interchangeable core (SFIC)
- Best® F-Type
- 0-bitted

CBI	BF7	KD	-	26D
MODEL	LENGTH	KEYING		FINISH

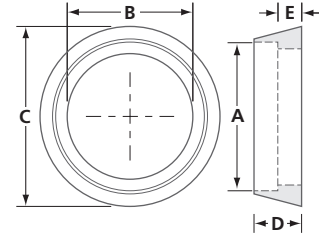
MODEL	FINISH	MATERIAL	A	B	$\varnothing C$
CBI-BF7	26D	BRASS	0.96 (24.26)	1.25 (31.8)	0.56 (14.1)

IN (MM) 26D: SATIN CHROME

LOCK CYLINDERS

SECURITY & SPECIALTY HARDWARE

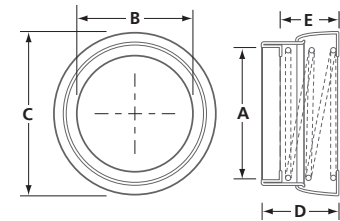
CYLINDER TRIM RINGS



MODEL	FINISH	MATERIAL	øA	øB	øC	D	E	/BOX
817S	10B, 26D	Hardened steel	1 ¹³ / ₃₂ (36.0)	1 ³ / ₁₆ (30.0)	1 ¹¹ / ₁₆ (42.9)	⁷ / ₁₆ (11.4)	⁹ / ₃₂ (7.0)	50
818S	10B, 26D	Hardened steel	1 ¹ / ₂ (37.8)	1 ³ / ₁₆ (30.0)	1 ¹¹ / ₁₆ (42.9)	⁹ / ₃₂ (7.3)	³ / ₁₆ (4.4)	50
819A	28	Aluminum	1 ¹¹ / ₃₂ (34.0)	1 ⁷ / ₃₂ (31)	1 ⁷ / ₈ (47.6)	¹ / ₈ (3.75)	³ / ₃₂ (2.0)	100

IN (MM) 10B: OIL RUBBED BRONZE 26D: SATIN CHROME 28: ALUMINUM

ADJUSTABLE CYLINDER TRIM RING



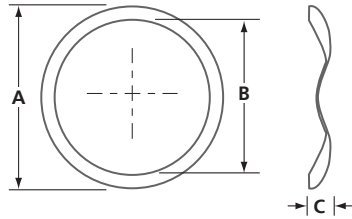
MODEL	FINISH	MATERIAL	øA	øB	øC	D	E	/BOX
814S	26D	Steel	1 ³ / ₈ (35.0)	1 ³ / ₁₆ (30.0)	2 (50.8)	⁹ / ₁₅ - ⁷ / ₈ (14.3-22.2)	²⁷ / ₆₄ - ⁴⁷ / ₆₄ (10.7-18.6)	250

IN (MM) 26D: SATIN CHROME

LOCK CYLINDERS

SECURITY & SPECIALTY HARDWARE

SPRING WASHER

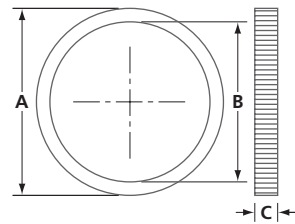


- Stainless steel spring washer for $1\frac{5}{32}$ " (29 mm) mortise cylinder

MODEL	MATERIAL	$\varnothing A$	$\varnothing B$	C	/BOX
820S	Stainless steel	$1\frac{3}{8}$ (35)	$1\frac{5}{32}$ (29)	$\frac{5}{32}$ (4.1)	500

IN (MM)

MORTISE CYLINDER RING NUT



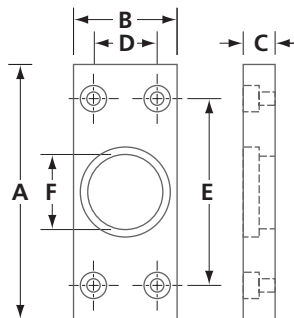
- Solid brass threaded locking ring nut for $1\frac{5}{32}$ " (29 mm) mortise cylinder

MODEL	MATERIAL	$\varnothing A$	$\varnothing B$	C	/BOX
2315-2	Brass	$1\frac{5}{16}$ (33.5)	$1\frac{1}{8}$ (28.6)	$\frac{5}{32}$ (4.1)	100

IN (MM)

CYLINDER GUARD

5510



- Heavy aluminum plate
- Mounts to metal door with 4 steel $\frac{3}{16}$ " (4.8 mm) pop rivets (included)
- $\frac{1}{4}$ " (6.4 mm) cylinder recess

MODEL	FINISH	A	B	C	D	E	$\varnothing F$	/BOX
5510AL	Aluminum	4 (102)	$1\frac{3}{8}$ (41.4)	$\frac{1}{2}$ (12.8)	1 (25.5)	3 (76)	$1\frac{3}{16}$ (30.1)	20

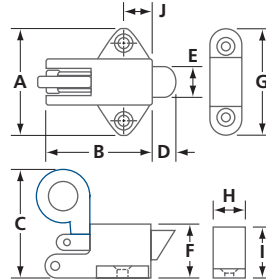
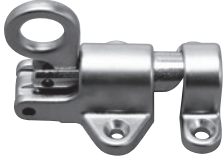
IN (MM)

WINDOW HARDWARE

SECURITY & SPECIALTY HARDWARE

TRANSOM CATCH

DC25



- Spring loaded latch
- Includes keeper

MODEL	FINISH	MATERIAL	A	B	C	D	E	F	G	H	I	J	/BOX
DC25	SL	Zinc die-cast	1 ¹³ / ₁₆ (46)	1 ³ / ₄ (44.5)	1 ³ / ₄ (44.5)	1 ¹³ / ₃₂ (10.3)	1/2 (12.7)	7/8 (22.2)	1 ³ / ₄ (44.5)	1/2 (12.7)	7/8 (22.2)	1/2 (12.7)	20

IN (MM) SL: SILVER LAQUER

SASH HOOK

DC60



- Zinc die-cast hook
- Chrome plated
- Available with 3/4" (19 mm) diameter, 6 ft. or 12 ft. (1.83 m or 3.66 m) vinyl covered wood pole

MODEL	DESCRIPTION	/BOX
DC60	Hook only, no pole	30
DC60P	Hook with 6 ft. (1.83 m) vinyl covered pole	20

