

DOOR CONTROL

SECURITY & SPECIALTY HARDWARE

REMOVABLE DOOR MULLION

M418NF, M424FR



TOP
BRACKET



BOTTOM
BRACKET

- Removable steel door mullion for use on standard or fire rated pairs of doors
- Provides a solid and secure center point for latching double doors
- Requires wide stile doors with a minimum width of 3¼" (82.5 mm)
- 2 x 3" (50.8 x 76 mm) steel tube, ⅛" (3mm) gauge for heavy duty use
- Can accommodate door frames up to 96" (2438 mm) high
- Lockable, removable or fixed
- Accepts standard rim cylinder and includes cylinder mounting hardware (not included)
- Cast steel top and bottom brackets included
- Painted aluminum finish
- Mounting hardware included: machine screws and floor anchors
- #M418NF for standard paired doors up to 96" (2438 mm) high
- #M424FR UL Listed for fire rated paired doors up to 96" (2438 mm) high and includes longer floor anchors

M418NF
MODEL

GRAVITY DOOR COORDINATOR

DCG7, DCG9



- UL listed for fire doors, conforms to ANSI/BHMA 156.3 type 21
- For use on paired doors with astragal up to 4" (102 mm) to allow inactive door to close before active door
- Non-handed
- Surface mounted
- Solid brass, satin chrome finish
- Nylon and rubber rollers and strike plate provide quiet and efficient operation and help protect the doors from damage
- Mounting hardware included: machine screws

DCG9	-26D
MODEL	FINISH

MODEL	USAGE
DCG7	Use with paired doors with an active door size (with astragal) ≤ 48" (1290 mm) wide OR paired doors with an inactive door (with astragal) ≤ 40" (1016 mm) wide OR paired doors both with astragals ≤ 34" (864 mm) wide
DCG9	Use with paired doors with active door size (with astragal) > 48" (1290 mm) wide OR paired doors with inactive door with astragal > 40" (1016 mm) wide OR paired doors both with astragals > 34" (864 mm) wide

DOOR CONTROL

SECURITY & SPECIALTY HARDWARE

DOOR COORDINATOR – SURFACE MOUNTED

DCM, DCFB, DCMB



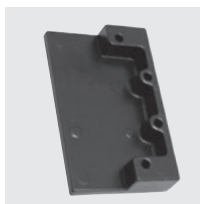
- UL listed fire door coordinator
- Use on paired doors (with or without astragal) to allow inactive door to close before active door
- Non-handed
- Surface mounted
- Aluminum extrusion with steel components
- Active door holding lever with adjustable tension
- Mounting hardware included: machine screws
- Anodized aluminum finish (28)
- Filler bars – available
- Mounting brackets for other components – available

DCSM	42	28
MODEL	SIZE	FINISH

SIZE	LENGTH	USAGE
32	32 (813)	For openings 34–52" (864–1320 mm) or a pair of 24" (610 mm) doors
42	42 (1067)	For openings 52–72" (1320–1829 mm) or a pair of 30" (762 mm) doors
52	52 (1320)	For openings 62–92" (1575–2337 mm) or a pair of 36" (914 mm) doors
60	60 (1524)	For openings 70–108" (1778–2743 mm) or a pair of 42" (1067 mm) doors

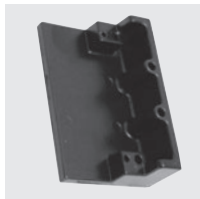
IN (MM)

MOUNTING BRACKETS



DCMB4250-BLK

- Allows other components to be installed over door coordinator
- Use with door frames with a door stop height of $\frac{5}{8}$ " (16 mm) and a minimum door stop width of $2\frac{1}{2}$ " (64 mm)
- Sold individually



DCMB4750-BLK

- Allows other components to be installed over door coordinator
- Use with door frames with a door stop height of $\frac{5}{8}$ " (16 mm) and a door stop width between $\frac{7}{8}$ – $2\frac{1}{4}$ " (22–57 mm)
- Sold individually

FILLER BARS



DCFB

- DCSM coordinators do not always cover entire length of door stop. Filler bars are used to maintain a clean aesthetic look.
- Aluminum extrusion, anodized finish (28)

ITEM	DIMENSIONS*
DCFB18-28	18 x $1\frac{5}{8}$ x $\frac{5}{8}$ (457 x 41 x 16)
DCFB32-28	32 x $1\frac{5}{8}$ x $\frac{5}{8}$ (813 x 41 x 16)
DCFB42-28	42 x $1\frac{5}{8}$ x $\frac{5}{8}$ (1067 x 41 x 16)

IN (MM) (*) LENGTH X WIDTH X HEIGHT