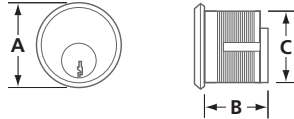


LOCK CYLINDERS

SECURITY & SPECIALTY HARDWARE

MORTISE CYLINDERS – BRASS

CBM



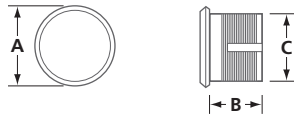
KEY CYLINDER

- Solid brass construction with aluminum clad face
- 5-pin, or 5-pin drilled for 6-pin
- Trim ring included
- Keyways: Schlage (SC), Yale #9 (Y9) or Weiser (WR)
- Includes 2 keys
- Cams: Adams Rite type (cam A) or Yale type (cam B)

CBM	118	A	-	SC	KD	-	28
MODEL	LENGTH	CAM	KEY	KEYING	FINISH		

MODEL	LENGTH	∅A	B	∅C	CAM	KEYWAY	KEYING	PINS	FINISH	/CASE
CBM	100	1 ³ / ₈ (35)	1 (25.4)	1 ⁵ / ₃₂ (29.1)	A, B	SC, Y9, WR	KA, K2, KD	5	20D, 26D, 28	100
CBM	118	1 ³ / ₈ (35)	1 ¹ / ₈ (29)	1 ⁵ / ₃₂ (29.1)	A, B	SC, Y9, WR	KA, K2, KD	5*	20D, 28	100
CBM	114	1 ³ / ₈ (35)	1 ¹ / ₄ (32)	1 ⁵ / ₃₂ (29.1)	A, B	SC, Y9, WR	KA, K2, K3, KD	5*	20D, 28	100

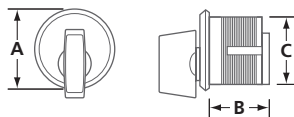
IN (MM) (*) 5-PIN CYLINDER, DRILLED 6 20D: DARK BRONZE 28: ALUMINUM
KA: KEYED ALIKE K2: KEYED ALIKE, PAIRED CYLINDERS, 50 PAIRS PER CASE KD: KEYED DIFFERENT



DUMMY CYLINDER

- Solid brass construction with aluminum clad face
- Trim ring included

CBM	100	-	DM	-	28
MODEL	LENGTH	TYPE	FINISH		



THUMB-TURN CYLINDER

- Solid brass construction with aluminum clad face
- Trim ring included
- Cams: Adams Rite type (cam A) or Yale type (cam B)

CBM	100	A	-	T1	-	28
MODEL	LENGTH	CAM	TYPE	FINISH		

MODEL	LENGTH	∅A	B	∅C	CAM*	TYPE	FINISH	/CASE
CBM	100	1 ³ / ₈ (35)	1 (25.4)	1 ⁵ / ₃₂ (29.1)	A, B	DM, T1	20D, 28	100

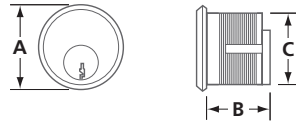
IN (MM) (*) LEAVE BLANK WHEN ORDERING DUMMY CYLINDER 20D: DARK BRONZE 28: ALUMINUM

LOCK CYLINDERS

SECURITY & SPECIALTY HARDWARE

MORTISE CYLINDERS – ZINC

CZM



KEY CYLINDER

- Solid zinc construction with aluminum clad face
- 5-pin cylinder
- Trim ring included
- Keyways: Schlage (SC), Yale #9 (Y9) or Weiser (WR)
- Includes 2 keys
- Cams: Adams Rite type (cam A) or Yale type (cam B)

CZM	100	A	-	SC	KD	-	28
MODEL	LENGTH	CAM	KEY	KEYING	FINISH		

MODEL	LENGTH	∅A	B	∅C	CAM	KEYWAY	KEYING	PINS	FINISH	/CASE
CZM	100	1 ³ / ₈ (35)	1 (25.4)	1 ⁵ / ₃₂ (29.1)	A, B	SC, Y9	KA, KA2, KD	5	20D, 28	100

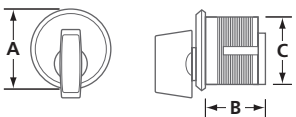
IN (MM) 20D: DARK BRONZE 28: ALUMINUM
KA: KEYED ALIKE K2: KEYED ALIKE, PAIRED CYLINDERS, 50 PAIRS PER CASE KD: KEYED DIFFERENT



DUMMY CYLINDER

- Solid zinc construction with aluminum clad face
- Trim ring included

CZM	100	-	DM	-	28
MODEL	LENGTH	TYPE	FINISH		



THUMB-TURN CYLINDER

- Solid zinc construction with aluminum clad face
- Trim ring included
- Cams: Adams Rite type (cam A) or Yale type (cam B)

CZM	100	A	-	T1	-	28
MODEL	LENGTH	CAM	TYPE	FINISH		

MODEL	LENGTH	∅A	B	∅C	CAM*	TYPE	FINISH	/CASE
CZM	100	1 ³ / ₈ (35)	1 (25.4)	1 ⁵ / ₃₂ (29.1)	A, B	DM, T1	20D, 28	100

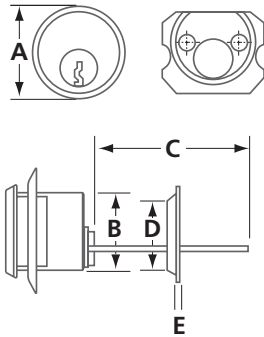
IN (MM) (*) LEAVE BLANK WHEN ORDERING DUMMY CYLINDER 20D: DARK BRONZE 28: ALUMINUM

LOCK CYLINDERS

SECURITY & SPECIALTY HARDWARE

RIM CYLINDER

CBR



- Solid brass with aluminum clad face, trim ring included
- Cylinder length: 114 = 1 1/4" (32 mm)
- Keyways: Schlage (SC), Yale #9 (Y9) or Weiser (WR)
- 2 keys included
- Standard tailpiece and mounting hardware

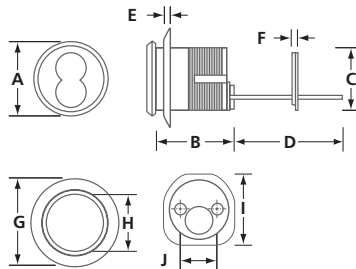
CBR	114	-	Y9	KD	-	26D
MODEL	LENGTH	KEY	KEYING	FINISH		

MODEL	øA	øB	C	D	E
CBR	1 3/8 (34.5)	1 5/32 (29.1)	2 7/16 (62)	1 1/4 (32)	1/16 (1.6)

IN (MM) 26D: SATIN CHROME

MORTISE/RIM COMBO SFIC CYLINDER HOUSING

9807H



- Solid brass housing for "BEST" small format interchangeable core 7-pin cylinder
- Can be used as a mortise cylinder (Schlage cam) or as a rim cylinder with floating tail piece

9807H	-	26D
MODEL	FINISH	

MODEL	øA	B	øC	D	E	F	øG	H	I	J
9807H	1 5/16 (33.3)	1 15/32 (37.2)	1 5/32 (29.4)	1 5/16 (33.3)	1/4 (6.4)	3/16 (4.8)	1 5/8 (41.3)	1 5/32 (29.4)	1 9/16 (39.7)	2 7/32 (21.0)

IN (MM)

MODEL	LENGTH	CAM	TAIL PIECE	KEYING	FINISH	/CASE
9807H	1 3/8 (35)	Schlage	Floating	—	26D	10

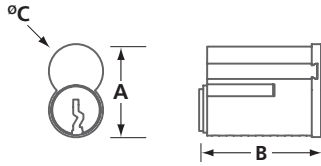
IN (MM) 26D: SATIN CHROME

LOCK CYLINDERS

SECURITY & SPECIALTY HARDWARE

BEST® F-TYPE SFIC CORE

CBI



- Solid brass 7 pin small format interchangeable core (SFIC)
- Best® F-Type
- 0-bitted

CBI	BF7	KD	-	26D
MODEL	LENGTH	KEYING		FINISH

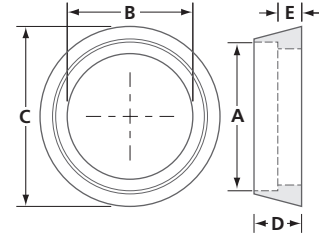
MODEL	FINISH	MATERIAL	A	B	øC
CBI-BF7	26D	BRASS	0.96 (24.26)	1.25 (31.8)	0.56 (14.1)

IN (MM) 26D: SATIN CHROME

LOCK CYLINDERS

SECURITY & SPECIALTY HARDWARE

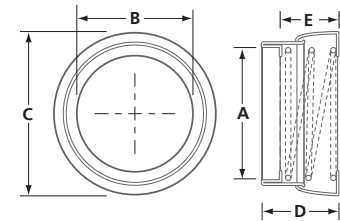
CYLINDER TRIM RINGS



MODEL	FINISH	MATERIAL	øA	øB	øC	D	E	/BOX
817S	10B, 26D	Hardened steel	1 ¹³ / ₃₂ (36.0)	1 ³ / ₁₆ (30.0)	1 ¹¹ / ₁₆ (42.9)	7/ ₁₆ (11.4)	9/ ₃₂ (7.0)	50
818S	10B, 26D	Hardened steel	1 ¹ / ₂ (37.8)	1 ³ / ₁₆ (30.0)	1 ¹¹ / ₁₆ (42.9)	9/ ₃₂ (7.3)	3/ ₁₆ (4.4)	50
819A	28	Aluminum	1 ¹¹ / ₃₂ (34.0)	1 ⁷ / ₃₂ (31)	1 ⁷ / ₈ (47.6)	1/ ₈ (3.75)	3/ ₃₂ (2.0)	100

IN (MM) 10B: OIL RUBBED BRONZE 26D: SATIN CHROME 28: ALUMINUM

ADJUSTABLE CYLINDER TRIM RING



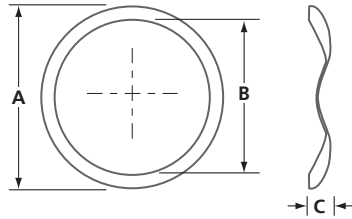
MODEL	FINISH	MATERIAL	øA	øB	øC	D	E	/BOX
814S	26D	Steel	1 ³ / ₈ (35.0)	1 ³ / ₁₆ (30.0)	2 (50.8)	9/ ₁₅ -7/ ₈ (14.3-22.2)	27/ ₆₄ -47/ ₆₄ (10.7-18.6)	250

IN (MM) 26D: SATIN CHROME

LOCK CYLINDERS

SECURITY & SPECIALTY HARDWARE

SPRING WASHER

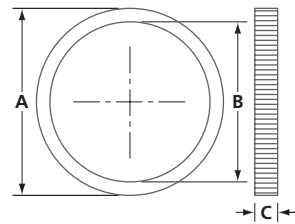


- Stainless steel spring washer for $1\frac{5}{32}$ " (29 mm) mortise cylinder

MODEL	MATERIAL	$\varnothing A$	$\varnothing B$	C	/BOX
820S	Stainless steel	$1\frac{3}{8}$ (35)	$1\frac{5}{32}$ (29)	$\frac{5}{32}$ (4.1)	500

IN (MM)

MORTISE CYLINDER RING NUT



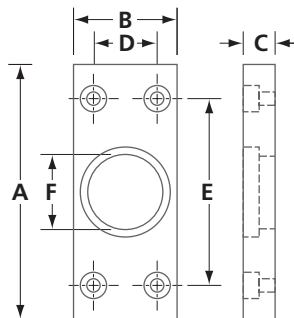
- Solid brass threaded locking ring nut for $1\frac{5}{32}$ " (29 mm) mortise cylinder

MODEL	MATERIAL	$\varnothing A$	$\varnothing B$	C	/BOX
2315-2	Brass	$1\frac{5}{16}$ (33.5)	$1\frac{1}{8}$ (28.6)	$\frac{5}{32}$ (4.1)	100

IN (MM)

CYLINDER GUARD

5510



- Heavy aluminum plate
- Mounts to metal door with 4 steel $\frac{3}{16}$ " (4.8 mm) pop rivets (included)
- $\frac{1}{4}$ " (6.4 mm) cylinder recess

MODEL	FINISH	A	B	C	D	E	$\varnothing F$	/BOX
5510AL	Aluminum	4 (102)	$1\frac{3}{8}$ (41.4)	$\frac{1}{2}$ (12.8)	1 (25.5)	3 (76)	$1\frac{3}{16}$ (30.1)	20

IN (MM)