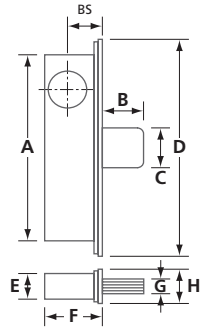


SWINGING DOOR HARDWARE

SECURITY & SPECIALTY HARDWARE

DOREX DB2100 DEADBOLT LOCK

DB21



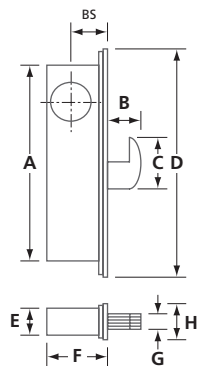
- Heavy zinc plated steel construction
- 5-ply laminated steel pivot bolt with 3 case-hardened center plies plus hardened roll pin (sawing test meets ANSI performance specifications)
- 1 3/8" (35.1 mm) bolt throw
- Non-handed
- Cylinder backset: 7/8" (22.2 mm), 31/32" (24.6 mm) or 1 1/8" (28.6 mm)
- Lock accepts standard 1 5/32" (29.4 mm) diameter mortise cylinder with cam A (Adams Rite type)
- Flat anodized aluminum (#FP11) faceplate included
- Other faceplates available, see page 3

MODEL	FINISH	BS	A	B	C	D	E	F	G	H	/CASE
DB2101-1	AL	7/8 (22.2)	6 (152.7)	1 3/8 (35.1)	1 3/8 (34.4)	6 7/8 (174.6)	29/32 (22.8)	1 19/32 (40.0)	5/8 (15.3)	1 (25.4)	25
DB2102-1	AL	31/32 (24.6)	6 (152.7)	1 3/8 (35.1)	1 3/8 (34.4)	6 7/8 (174.6)	29/32 (22.8)	1 5/8 (41.2)	5/8 (15.3)	1 (25.4)	25
DB2103-1	AL, DU	1 1/8 (28.6)	6 (152.7)	1 3/8 (35.1)	1 3/8 (34.4)	6 7/8 (174.6)	29/32 (22.8)	1 25/32 (45.1)	5/8 (15.3)	1 (25.4)	25

IN (MM) AL: ALUMINUM DU: DARK BRONZE

DOREX HB2300 HOOKBOLT LOCK

HB23



- Heavy zinc plated steel construction
- 5-ply laminated steel pivot bolt with 3 case-hardened center plies plus hardened roll pin (sawing test meets ANSI performance specifications)
- 1 3/16" (20.5 mm) bolt throw
- Non-handed
- Cylinder backset: 31/32" (24.6 mm) or 1 1/8" (28.6 mm)
- Lock accepts standard 1 5/32" (29.4 mm) diameter mortise cylinder with cam A (Adams Rite type)
- Flat anodized aluminum (#FP21) faceplate included
- Other faceplates available, see page 3

MODEL	FINISH	BS	A	B	C	D	E	F	G	H	/CASE
HB2302-1	AL, DU	31/32 (24.6)	6 (152.7)	17/32 (13.4)	1 1/4 (31.8)	6 7/8 (174.6)	29/32 (22.9)	1 5/8 (41.4)	5/8 (15.3)	1 (25.4)	25
HB2303-1	AL, DU	1 1/8 (28.6)	6 (152.7)	17/32 (13.4)	1 1/4 (31.8)	6 7/8 (174.6)	29/32 (22.9)	1 25/32 (45.1)	5/8 (15.3)	1 (25.4)	25

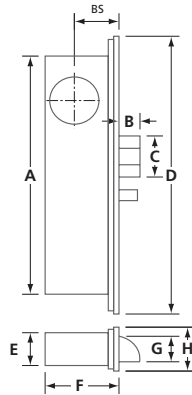
IN (MM) AL: ALUMINUM DU: DARK BRONZE

SWINGING DOOR HARDWARE

SECURITY & SPECIALTY HARDWARE

DOREX DL2400 DEADLATCH LOCK

DL24



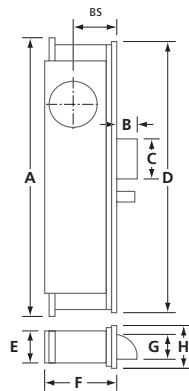
- Heavy zinc plated steel construction
- Chrome plated latch bolt with Delrin insert for smooth, quiet latching
- 1/2" (12.7 mm) latch throw
- Zinc alloy dead locking pin
- Left or right handed, field reversible
- Cylinder backset: 3 1/32" (24.6 mm) or 1 1/8" (28.6 mm)
- Lock accepts standard 1 5/32" (29.4 mm) diameter mortise cylinder with cam A (Adams Rite type)
- Key or turn-button controlled latch dogging
- Radius anodized aluminum (#FP32) faceplate included
- Other faceplates available, see page 3

MODEL	FINISH	HANDING	BS	A	B	C	D	E	F	G	H	/CASE
DL2412-2	AL, DU	LEFT	3 1/32 (24.6)	5 27/32 (148.1)	1/2 (12.7)	1 (25.3)	6 7/8 (174.6)	7/8 (22.2)	1 19/32 (40.6)	5/8 (16.2)	1 (25.4)	25
DL2422-2	AL, DU	RIGHT										
DL2413-2	AL, DU	LEFT	1 1/8 (28.6)	5 27/32 (148.1)	1/2 (12.7)	1 (25.3)	6 7/8 (174.6)	7/8 (22.2)	1 19/32 (40.6)	5/8 (16.2)	1 (25.4)	25
DL2423-2	AL, DU	RIGHT										

IN (MM) AL: ALUMINUM DU: DARK BRONZE

DOREX DL2500 DEADLATCH LOCK – HEAVY DUTY

DL25



- Heavy zinc plated steel construction
- Adjustable mounting studs for easy lock alignment
- Solid zinc alloy latch bolt with 1/2" (12.7 mm) throw
- Zinc alloy dead locking pin
- Left or right handed, field reversible
- Cylinder backset: 3 1/32" (24.6 mm) or 1 1/8" (28.6 mm)
- Lock accepts standard 1 5/32" (29.4 mm) diameter mortise cylinder with cam A (Adams Rite type)
- Key or turn-button controlled latch dogging
- Radius anodized aluminum (#FP32) faceplate included
- Other faceplates available, see page 3

MODEL	FINISH	HANDING	BS	A	B	C	D	E	F	G	H	/CASE
DL2512-2	AL	LEFT	3 1/32 (24.6)	7 (177.8)	1/2 (12.7)	1 (25.4)	6 7/8 (174.6)	7/8 (22.5)	1 5/8 (41.2)	5/8 (15.7)	1 (25.4)	25
DL2522-2	AL	RIGHT										
DL2513-2	AL	LEFT	1 1/8 (28.6)	7 (177.8)	1/2 (12.7)	1 (25.4)	6 7/8 (174.6)	7/8 (22.5)	1 5/8 (41.2)	5/8 (15.7)	1 (25.4)	25
DL2523-2	AL, DU	RIGHT										

N (MM) AL: ALUMINUM DU: DARK BRONZE

SWINGING DOOR HARDWARE

SECURITY & SPECIALTY HARDWARE

DOREX MORTISE LOCK FACEPLATES



STILE	FORM	DESCRIPTION	SERIES	MODEL	FINISH	/CASE
		Flat 6 $\frac{7}{8}$ "x1 (174.6x25.4)	DB	FP11	AL DU	25
			HB	FP21		
			DL	FP31		
		Bevelled, left hand 6 $\frac{7}{8}$ "x1 (174.6x25.4)	DB	FP13	AL DU	25
			HB	FP23		
			DL	FP33		
		Bevelled, right hand 6 $\frac{7}{8}$ "x1 (174.6x25.4)	DB	FP14	AL DU	25
			HB	FP24		
			DL	FP34		
		Radius 6 $\frac{7}{8}$ "x1 (174.6x25.4)	DB	FP12	AL DU	25
			HB	FP22		
			DL	FP32		
		Radius, weatherstrip, left hand 6 $\frac{7}{8}$ "x1 (174.6x25.4)	DB	FP15	AL DU	25
			HB	FP25		
			DL	FP35		
		Radius, weatherstrip, right hand 6 $\frac{7}{8}$ "x1 (174.6x25.4)	DB	FP16	AL DU	25
			HB	FP26		
			DL	FP36		

IN (MM)

AL: ALUMINUM DU: DARK BRONZE

ALL FACEPLATES ARE ANODIZED ALUMINUM

DOREX VARIOUS ACCESSORIES



LS01 DL STRIKE

- Standard flat stainless steel deadlatch strike
- Includes dustbox, mounting plate and machine screws

LS02 DL STRIKE

- Flat reversible stainless steel deadlatch strike (used when converting to DL series from door prepped for DB or HB series)
- Includes black plastic dust box, steel mounting plate and machine screws

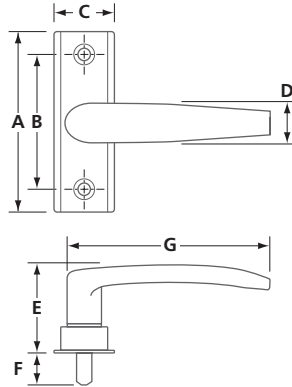
SWINGING DOOR HARDWARE

SECURITY & SPECIALTY HARDWARE

DOREX LEVER HANDLE



RIGHT HAND (RH)
HANDLE SHOWN



- Lever handle with cam for DL2000 series deadlatch, to be used on 1 $\frac{3}{4}$ " (44 mm) thick aluminum doors
- Left hand or right hand, field reversible
- Sturdy and dependable aluminum alloy construction
- Hardened steel spindle and cam
- 3" (76 mm) center to center mounting holes
- Cam (#0112PLUGLH / RH) included but also sold separately

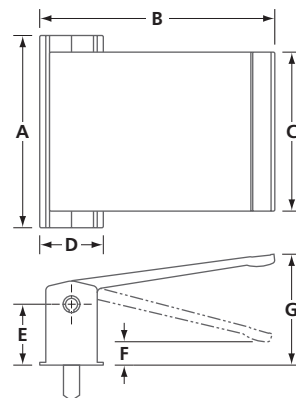
#0112RH for Left Hand Reverse (LHR) or right hand (RH) outswing doors
#0112LH for Right Hand Reverse (RHR) or left hand (LH) outswing doors

For LH handle in Left Hand Reversed use #0112PLUGRH
For RH handle in Right Hand Reversed use #0112PLUGLH

MODEL	HAND	FINISH	A	B	C	D	E	F	G	/CASE
0112	LH, RH	20D, 28	4 (101.5)	3 (76.0)	1 $\frac{11}{32}$ (34.0)	$\frac{7}{8}$ (22.4)	1 $\frac{15}{16}$ (48.8)	2 $\frac{3}{32}$ (18.0)	3 $\frac{3}{4}$ (95.1)	50

IN (MM) LH: LEFT HAND, RH: RIGHT HAND 20D: DARK BRONZE 28: ALUMINUM

DOREX PUSH/PULL PADDLE



- PUSH / PULL paddle with cam for DL2000 series deadlatch
- Left hand or right hand, field reversible
- Zinc alloy base
- Extruded and anodized aluminum paddle
- 3" (76.2 mm) center to center concealed mounting holes
- Spring (#5590S) and extension kit (#5590SPK) for 2 $\frac{1}{4}$ " (57.2 mm) door thickness are available
- Cam (0112PLUGLH / RH) included but also sold separately

#5590*R for Left Hand Reverse (LHR) or right hand (RH) outswing doors
#5590*L for Right Hand Reverse (RHR) or left hand (LH) outswing doors

For LH handle in Left Hand Reversed use #0112PLUGRH
For RH handle in Right Hand Reversed use #0112PLUGLH

MODEL	FINISH	HAND	A	B	C	D	E	F	G	/CASE
5590	20D, 28	L, R	4 $\frac{1}{32}$ (102.8)	4 $\frac{15}{16}$ (125.7)	3 $\frac{11}{32}$ (85.0)	1 $\frac{11}{32}$ (34.0)	1 $\frac{5}{16}$ (33.0)	$\frac{9}{16}$ (14.0)	2 $\frac{3}{8}$ (60.0)	20

IN (MM) L: LEFT HAND, R: RIGHT HAND 20D: DARK BRONZE 28: ALUMINUM

