



- Type** • Cylindrical lock
- Certifications**
  - Conforms to ANSI/NHMA A156.2, Series 4000, Grade 1
  - UL listed, 3hr fire-rating
  - UL 10C Positive Pressure Rating
  - Meets ADA requirements
  - 10 Year limited warranty
- Door Thickness**
  - 1 $\frac{3}{8}$ –2" (35–51mm)
  - SFIC Models: 1 $\frac{9}{16}$ –2" (40–51mm)
- Handing** • Non handed
- Backset**
  - 2 $\frac{3}{4}$ " (70 mm)
  - 2 $\frac{3}{8}$ " (60 mm) – available
  - 3 $\frac{3}{4}$ " (95 mm) – available
  - 5" (127 mm) – available
- Spring Latch**
  - Stainless steel,  $\frac{1}{2}$ " (12.7 mm) throw
  - Deadlatch,  $\frac{3}{4}$ " (19 mm) throw – available
- Faceplate**
  - Mortise type, square corners
  - 1 $\frac{1}{8}$ x2 $\frac{1}{4}$ " (28.5x57 mm)
- Strike** • ASA Strike
- Trim**
  - Solid, pressure cast lever
  - Brass rose
  - Rose diameter: 3 $\frac{9}{16}$ " (90 mm)
- Chassis**
  - Concealed mounting plate and screws
  - Fixed security posts
  - Lever clutch release
- Preparation**
  - Cross bore: 2 $\frac{1}{8}$ " (54 mm)
  - Edge bore: 1" (25.4 mm)
- Cylinder**
  - Solid brass, 6-pin
  - Schlage "C" keyway, 2 keys
  - Removable, rekeyable
  - Small format interchangeable core (SFIC) model – available\*

*Other keyways and keying options available, including CX5 high security. (\*) BEST® and CX5® cores sold separately.*
- Functions**

10 Passage	70 Classroom
17 Dummy, single	75 Classroom security
42 Privacy	80 Storeroom
53 Entry	82 Institution
- Lever Styles** L–Standard return
- Finish** 26D–Satin chrome, 19–Matte black  
*Other finishes available by special order*

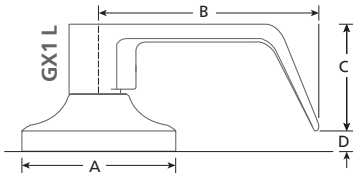
GX1L	53	- 26D
SERIES	FUNCTION	FINISH


## SELECTION GUIDE

SERIES	FUNCTION	FINISH <sup>1</sup>	/CASE
GX1 L	10 Passage	26D, 19	6
GX1 L	17 Dummy, single	26D, 19	6
GX1 L	42 Privacy	26D, 19	6
GX1 L	53 Entry ↔	26D, 19	6
GX1 L	53IC Entry SFIC, less core ↔	26D, 19	6
GX1 L	70 Classroom ↔	26D, 19	6
GX1 L	70IC Classroom SFIC, less core ↔	26D, 19	6
GX1 L	75 Classroom security ↔	26D	6
GX1 L	80 Storeroom ↔	26D, 19	6
GX1 L	80IC Storeroom SFIC, less core ↔	26D, 19	6
GX1 L	82 Institution / utility ↔	26D	6

(1) OTHER FINISHES AND FUNCTIONS AVAILABLE, MINIMUM ORDER QUANTITIES AND/OR ADDITIONAL DELIVERY TIMES MAY BE REQUIRED.

↔ KEYED FUNCTION; FULL KEYING SERVICES AVAILABLE.



	A	B	C	D*
GX1 L 	3 <sup>9</sup> / <sub>16</sub> (90)	5 (127)	2 <sup>5</sup> / <sub>8</sub> (66.7)	3 <sup>3</sup> / <sub>8</sub> (10)

IN (MM) (\*) DIMENSION MAY VARY DUE TO DOOR THICKNESS.

## PARTS & ACCESSORIES



9106  
T-Strike, square corners:  
1<sup>1</sup>/<sub>8</sub>x2<sup>3</sup>/<sub>4</sub>" (28.5x70 mm)

9106NH  
T-Strike, no hole; square corners:  
1<sup>1</sup>/<sub>8</sub>x2<sup>3</sup>/<sub>4</sub>" (28.5x70 mm)



ASA-T  
ASA strike with adjustable tab  
ASANH  
ASA strike, no hole



9806  
CX5 high security SFIC core, 6 pin, 0 bitted

9807  
CX5 high security SFIC core, 7 pin, 0 bitted

CBI-BF7KD-26D  
BEST® F type SFIC core, 7 pin, keyed different



GX1SL238  
Passage latch: 2<sup>3</sup>/<sub>8</sub>" (60 mm) backset  
1<sup>1</sup>/<sub>8</sub>x2<sup>1</sup>/<sub>4</sub>" (28.5x57 mm) faceplate

GX1SL234  
Passage latch: 2<sup>3</sup>/<sub>4</sub>" (70 mm) backset  
1<sup>1</sup>/<sub>8</sub>x2<sup>1</sup>/<sub>4</sub>" (28.5x57 mm) faceplate

GX1PL238  
Privacy latch: 2<sup>3</sup>/<sub>8</sub>" (60 mm) backset  
1<sup>1</sup>/<sub>8</sub>x2<sup>1</sup>/<sub>4</sub>" (28.5x57 mm) faceplate

GX1PL234  
Privacy latch: 2<sup>3</sup>/<sub>4</sub>" (70 mm) backset  
1<sup>1</sup>/<sub>8</sub>x2<sup>1</sup>/<sub>4</sub>" (28.5x57 mm) faceplate



GX1DL238  
Deadlatch: 2<sup>3</sup>/<sub>8</sub>" (60) backset  
1<sup>1</sup>/<sub>8</sub>x2<sup>1</sup>/<sub>4</sub>" (28.5x57 mm) faceplate

GX1DL234  
Deadlatch: 2<sup>3</sup>/<sub>4</sub>" (70 mm) backset  
1<sup>1</sup>/<sub>8</sub>x2<sup>1</sup>/<sub>4</sub>" (28.5x57 mm) faceplate



GX1DL234-34  
Deadlatch: 2<sup>3</sup>/<sub>4</sub>" (70 mm) backset, 3<sup>1</sup>/<sub>4</sub>" (19 mm) throw, 1<sup>1</sup>/<sub>8</sub>x2<sup>1</sup>/<sub>4</sub>" (28.5x57 mm) faceplate  
*For use in double door or electric strike applications*



GX1LE334  
Backset extension to 3<sup>3</sup>/<sub>4</sub>" (95 mm); use with 2<sup>3</sup>/<sub>8</sub>" (60 mm) backset latch

GX1LE500  
Backset extension to 5" (127 mm); use with 2<sup>3</sup>/<sub>4</sub>" (70 mm) backset latch



- Type** • Cylindrical lock
- Certifications**
  - Conforms to ANSI/BHMA A156.2
  - UL listed, 3hr fire-rating
  - UL 10C Positive Pressure Rating
  - 10 Year limited warranty
- Door Thickness**
  - 1<sup>3</sup>/<sub>8</sub>–2" (35–51 mm)
  - SFIC models: 1<sup>9</sup>/<sub>16</sub>–2" (40–51 mm)
- Handing** • Non handed
- Backset**
  - 2<sup>3</sup>/<sub>4</sub>" (70 mm)
  - 2<sup>3</sup>/<sub>8</sub>" (60 mm) – available
  - 3<sup>3</sup>/<sub>4</sub>" (95 mm) – available
  - 5" (127 mm) – available
- Spring Latch**
  - Stainless steel, 1/2" (12.7 mm) throw
  - Deadlatch, 3/4" (19 mm) throw – available
- Faceplate**
  - Mortise type, square corners
  - 1<sup>1</sup>/<sub>8</sub>x2<sup>1</sup>/<sub>4</sub>" (28.5x57 mm)
- Strike** • ASA Strike
- Trim**
  - Stainless steel knob
  - Stainless steel rose
  - Rose diameter: 2<sup>15</sup>/<sub>16</sub>" (74.6 mm)
- Chassis**
  - Concealed mounting plate and screws
  - Removable security posts

- Preparation**
  - Cross bore: 2<sup>1</sup>/<sub>8</sub>" (54 mm)
  - Edge bore: 1" (25.4 mm)
- Cylinder**
  - Solid brass, 6-pin
  - Schlage "C" keyway, 2 keys
  - Removable, rekeyable
  - Small format interchangeable core (SFIC) model – available\*

*Other keyways and keying options available, including CX5 high security. (\*) BEST® and CX5® cores sold separately.*

<b>Functions</b>	<b>10</b> Passage	<b>70</b> Classroom
	<b>42</b> Privacy	<b>80</b> Storeroom
	<b>53</b> Entry	

**Finish** 32D–Stainless steel

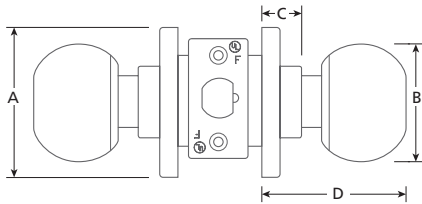
*Other finishes available by special order*

GX1B	53	-	32D
SERIES	FUNCTION		FINISH

## SELECTION GUIDE

SERIES	FUNCTION	FINISH <sup>1</sup>	/CASE
GX1 B	10 Passage	32D	6
GX1 B	42 Privacy	32D	6
GX1 B	53 Entry ↔	32D	6
GX1 B	53IC Entry SFIC, less core ↔	32D	6
GX1 B	70 Classroom ↔	32D	6
GX1 B	70IC Classroom SFIC, less core ↔	32D	6
GX1 B	80 Storeroom ↔	32D	6
GX1 B	80IC Storeroom SFIC, less core ↔	32D	6

(1) OTHER FINISHES AND FUNCTIONS AVAILABLE, MINIMUM ORDER QUANTITIES AND/OR ADDITIONAL DELIVERY TIMES MAY BE REQUIRED  
 ↔ KEYED FUNCTION; FULL KEYING SERVICES AVAILABLE



	A	B	C	D*
<b>GX1 B</b>	2 <sup>15</sup> / <sub>16</sub> (74.6)	2 <sup>1</sup> / <sub>4</sub> (57)	1 <sup>3</sup> / <sub>16</sub> (21)	2 <sup>5</sup> / <sub>8</sub> -3 (67-76)
IN (MM)	(*) DIMENSION MAY VARY DUE TO DOOR THICKNESS.			

## PARTS & ACCESSORIES



**9106**  
T-Strike, square corners:  
1<sup>1</sup>/<sub>8</sub>x2<sup>3</sup>/<sub>4</sub>" (28.5x70 mm)

**9106NH**  
T-Strike, no hole; square corners:  
1<sup>1</sup>/<sub>8</sub>x2<sup>3</sup>/<sub>4</sub>" (28.5x70 mm)



**ASA-T**  
ASA strike with adjustable tab

**ASANH**  
ASA strike, no hole



**9806**  
CX5 high security SFIC core, 6 pin, 0 bitted

**9807**  
CX5 high security SFIC core, 7 pin, 0 bitted

**CX5-TPICB**  
Tailpiece for use with CX5 SFIC cores

**CBI-BF6KD-26D**  
BEST® F type SFIC core, 6 pin, 0 bitted

**CBI-BF7KD-26D**  
BEST® F type SFIC core, 7 pin, 0 bitted



**GX1SL238**  
Passage latch: 2<sup>3</sup>/<sub>8</sub>" (60 mm) backset  
1<sup>1</sup>/<sub>8</sub>x2<sup>1</sup>/<sub>4</sub>" (28.5x57 mm) faceplate



**GX1SL234**  
Passage latch: 2<sup>3</sup>/<sub>4</sub>" (70 mm) backset  
1<sup>1</sup>/<sub>8</sub>x2<sup>1</sup>/<sub>4</sub>" (28.5x57 mm) faceplate



**GX1PL238**  
Privacy latch: 2<sup>3</sup>/<sub>8</sub>" (60 mm) backset  
1<sup>1</sup>/<sub>8</sub>x2<sup>1</sup>/<sub>4</sub>" (28.5x57 mm) faceplate



**GX1PL234**  
Privacy latch: 2<sup>3</sup>/<sub>4</sub>" (70 mm) backset  
1<sup>1</sup>/<sub>8</sub>x2<sup>1</sup>/<sub>4</sub>" (28.5x57 mm) faceplate

**GX1DL238**  
Deadlatch: 2<sup>3</sup>/<sub>8</sub>" (60) backset  
1<sup>1</sup>/<sub>8</sub>x2<sup>1</sup>/<sub>4</sub>" (28.5x57 mm) faceplate

**GX1DL234**  
Deadlatch: 2<sup>3</sup>/<sub>4</sub>" (70 mm) backset  
1<sup>1</sup>/<sub>8</sub>x2<sup>1</sup>/<sub>4</sub>" (28.5x57 mm) faceplate

**GX1DL234-34**  
Deadlatch: 2<sup>3</sup>/<sub>4</sub>" (70 mm) backset,  
3/4" (19 mm) throw, 1<sup>1</sup>/<sub>8</sub>x2<sup>1</sup>/<sub>4</sub>" (28.5x57 mm)  
faceplate

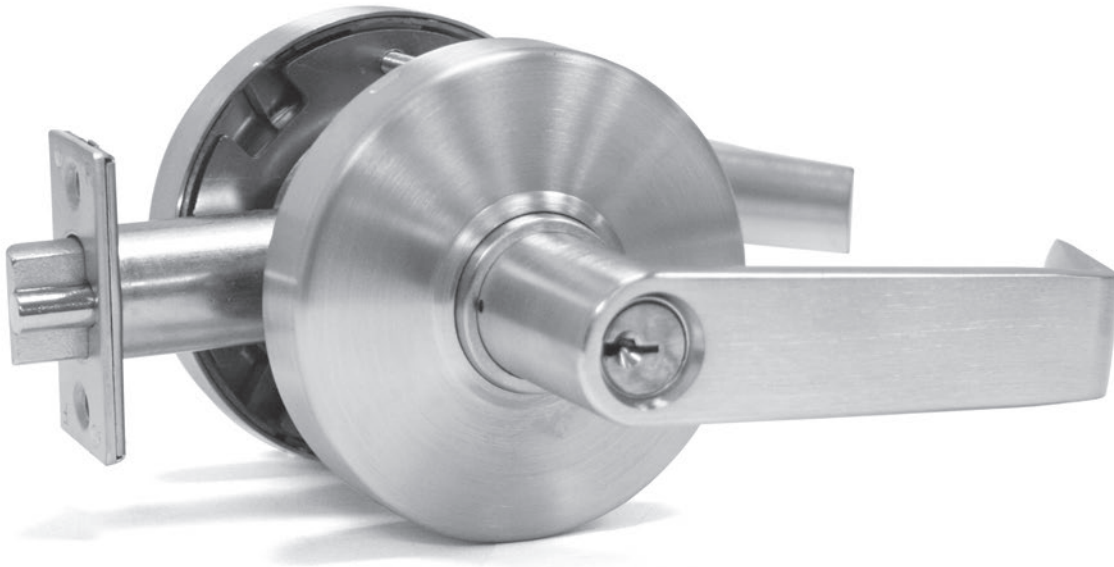


**GX1LE334**  
Backset extension to 3<sup>3</sup>/<sub>4</sub>" (95 mm); use with  
2<sup>3</sup>/<sub>8</sub>" (60 mm) backset latch

**GX1LE500**  
Backset extension to 5" (127 mm); use with  
2<sup>3</sup>/<sub>4</sub>" (70 mm) backset latch

# G1L SERIES

## COMMERCIAL LOCKSET



- Certifications**
- Conforms to ANSI/NHMA A156.2, Grade 1
  - UL listed, 3hr fire-rating
  - Meets ADA requirements
  - 5 Year limited warranty
- Door Thickness** • 1½–2" (38–51mm)
- Handing** • Non handed
- Backset** • 2¾" (70 mm)
- Spring Latch** • Stainless steel, ½" (12.7 mm) throw
- Faceplate** • Mortise type, square corners
- 1½x2¼" (28.5x57 mm)
- Strike** • ASA Strike
- Trim** • Solid, pressure cast lever
- Brass rose
  - Rose diameter: 3¾" (90 mm)
- Chassis** • Concealed mounting plate and screws
- Fixed security posts
  - Lever clutch release

- Preparation**
- Fits ANSI A115.2 161 door prep
  - Cross bore: 2½" (54 mm)
  - Edge bore: 1" (25.4 mm)
- Cylinder**
- Solid brass, 6-pin
  - Schlage "C" keyway, 2 keys
  - Removable, rekeyable
  - Small format interchangeable core (SFIC) model – available\*

*Other keyways and keying options available, including CX5 high security. (\*) BEST® and CX5® cores sold separately.*

<b>Functions</b>	<b>10</b> Passage	<b>70</b> Classroom
	<b>40</b> Privacy	<b>80</b> Storeroom
	<b>53</b> Entry	

**Finish** 26D–Satin chrome

*Other finishes available by special order*

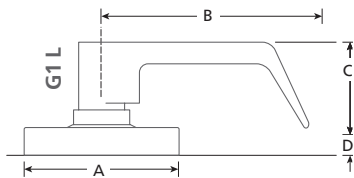
G1L	10	–	26D
SERIES	FUNCTION		FINISH

## SELECTION GUIDE

SERIES	FUNCTION	FINISH <sup>1</sup>	/CASE
G1L	10 Passage	26D	10
G1L	40 Privacy	26D	10
G1L	53 Entry ↔	26D	10
G1L	53IC Entry SFIC ↔	26D	10
G1L	70 Classroom ↔	26D	10
G1L	70IC Classroom SFIC ↔	26D	10
G1L	80 Storeroom ↔	26D	10
G1L	80IC Storeroom SFIC, less core ↔	26D	10

(1) OTHER FINISHES AND FUNCTIONS AVAILABLE, MINIMUM ORDER QUANTITIES AND/OR ADDITIONAL DELIVERY TIMES MAY BE REQUIRED.

↔ KEYED FUNCTION; FULL KEYING SERVICES AVAILABLE.



	A	B	C	D*
G1L	3 <sup>9</sup> / <sub>16</sub> (90)	4 <sup>5</sup> / <sub>8</sub> (117)	2 (51)	1/2 (12.7)

IN (MM) (\*) DIMENSION MAY VARY DUE TO DOOR THICKNESS.

## PARTS & ACCESSORIES



**STRIKE-T**  
T-Strike, square corners:  
1<sup>1</sup>/<sub>8</sub>x2<sup>3</sup>/<sub>4</sub>" (28.5x70 mm)



**ASA-T**  
ASA strike with adjustable tab



**9806**  
CX5 high security SFIC core, 6 pin, 0 bitted

**9807**  
CX5 high security SFIC core, 7 pin, 0 bitted

**CBI-BF7KD-26D**  
BEST® F type SFIC core, 7 pin, keyed different



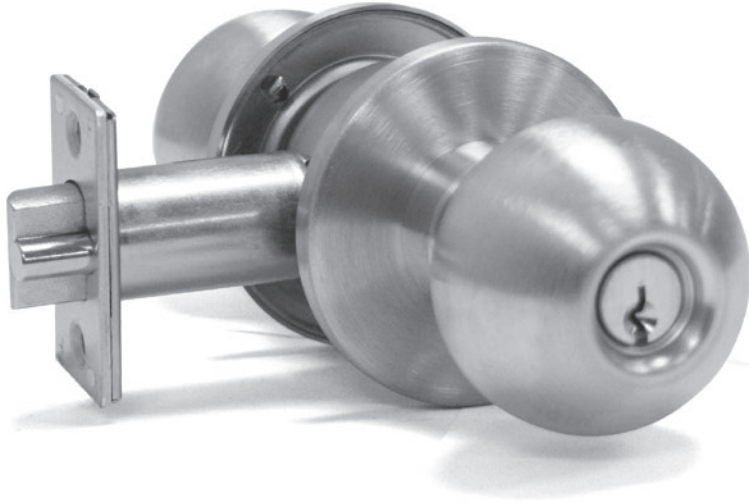
**G1SL234**  
Passage latch: 2<sup>3</sup>/<sub>4</sub>" (70 mm) backset  
1<sup>1</sup>/<sub>8</sub>x2<sup>1</sup>/<sub>4</sub>" (28.5x57 mm) faceplate



**G1DL234**  
Deadlatch: 2<sup>3</sup>/<sub>4</sub>" (70 mm) backset  
1<sup>1</sup>/<sub>8</sub>x2<sup>1</sup>/<sub>4</sub>" (28.5x57 mm) faceplate

# G1B SERIES

## COMMERCIAL LOCK



- Type** • Cylindrical lock
- Certifications**
  - Conforms to ANSI/BHMA A156.2, Series 4000, Grade 1
  - UL listed, 3hr fire-rating
  - 5 Year limited warranty
- Door Thickness** • 1 $\frac{3}{8}$ –2" (35–51 mm)
- Handing** • Non handed
- Backset** • 2 $\frac{3}{4}$ " (70 mm)
- Spring Latch** • Stainless steel,  $\frac{1}{2}$ " (12.7 mm) throw
- Faceplate**
  - Mortise type, square corners
  - 1 $\frac{1}{8}$ x2 $\frac{1}{4}$ " (28.5x57 mm)
- Strike** • ASA Strike
- Trim**
  - Stainless steel knob
  - Stainless steel rose
  - Rose diameter: 2 $\frac{3}{4}$ " (68 mm)

- Chassis**
  - Concealed mounting plate and screws
  - Removable security posts
- Preparation**
  - Fits ANSI A115.2 161 door prep
  - Cross bore: 2 $\frac{1}{8}$ " (54 mm)
  - Edge bore: 1" (25.4 mm)
- Cylinder**
  - Solid brass, 6-pin
  - Schlage "C" keyway, 2 keys
  - Removable, rekeyable
  - Small format interchangeable core (SFIC) model – available\*

*Other keyways and keying options available, including CX5 high security. (\*) BEST® and CX5® cores sold separately.*

<b>Functions</b>	10 Passage	70 Classroom
	40 Privacy	80 Storeroom
	53 Entry	82 Institution

**Finish** 26D–Satin chrome  
*Other finishes available by special order*

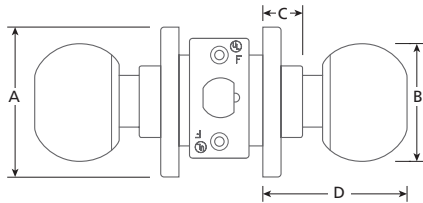
<b>G1B</b>	<b>53</b>	<b>-</b>	<b>26D</b>
SERIES	FUNCTION		FINISH

## SELECTION GUIDE

SERIES	FUNCTION	FINISH <sup>1</sup>	/CASE
G1B	10 Passage	26D	10
G1B	40 Privacy	26D	10
G1B	53 Entry ↔	26D	10
G1B	53IC Entry SFIC, less core ↔	26D	10
G1B	70 Classroom ↔	26D	10
G1B	70IC Classroom SFIC, less core ↔	26D	10
G1B	80 Storeroom ↔	26D	10
G1B	80IC Storeroom SFIC, less core ↔	26D	10
G1B	82 Institution ↔	26D	10

(1) OTHER FINISHES AND FUNCTIONS AVAILABLE, MINIMUM ORDER QUANTITIES AND/OR ADDITIONAL DELIVERY TIMES MAY BE REQUIRED

↔ KEYED FUNCTION; FULL KEYING SERVICES AVAILABLE



	A	B	C	D*
<b>G1B</b> (5)	2¾ (68)	2⅜ (55)	¾ (19)	2⅛ (75)

IN (MM) (\*) DIMENSION MAY VARY DUE TO DOOR THICKNESS.

## PARTS & ACCESSORIES



**STRIKE-T**  
T-Strike, square corners:  
1½x2¾" (28.5x70 mm)



**G1SL234**  
Passage latch: 2¾" (70 mm) backset  
1½x2¼" (28.5x57 mm) faceplate



**ASA-T**  
ASA strike with adjustable tab



**G1DL234**  
Deadlatch: 2¾" (70 mm) backset  
1½x2¼" (28.5x57 mm) faceplate



**9806**  
CX5 high security SFIC core, 6 pin, 0 bitted  
**9807**  
CX5 high security SFIC core, 7 pin, 0 bitted  
**CBI-BF7KD-26D**  
BEST® F type SFIC core, 7 pin, keyed different





- Type** • Cylindrical lock
- Certifications**
  - Certified ANSI/BHMA A156.2, Series 4000, Grade 2
  - UL listed, 3hr fire-rating
  - UL 10C Positive Pressure Rating
  - Meets ADA requirements
  - 10 Year limited warranty
- Door Thickness** • 1<sup>3</sup>/<sub>8</sub> – 1<sup>3</sup>/<sub>4</sub>" (35 – 44.5 mm)
- Handing** • Non handed
- Backset**
  - 2<sup>3</sup>/<sub>4</sub>" (70 mm)
  - 2<sup>3</sup>/<sub>8</sub>" (60 mm) – available
  - 3<sup>3</sup>/<sub>4</sub>" (95 mm) – available
  - 5" (127 mm) – available
- Spring Latch** • Stainless steel, 1/2" (12.7 mm) throw
- Faceplate**
  - Mortise type, square corners
  - 1<sup>1</sup>/<sub>8</sub> x 2<sup>1</sup>/<sub>4</sub>" (28.5 x 57 mm)
- Strike** • ASA Strike
- Trim**
  - Solid, pressure cast lever
  - Brass rose
  - Rose diameter: 3<sup>5</sup>/<sub>16</sub>" (84.5 mm)

- Chassis**
  - Concealed mounting plate and screws
  - Removable security posts
  - Lever clutch release – option
- Preparation**
  - Cross bore: 2<sup>1</sup>/<sub>8</sub>" (54 mm)
  - Edge bore: 1" (25.4 mm)
- Cylinder**
  - Solid brass, 6-pin
  - Schlage "C" keyway, 2 keys
  - Removable, rekeyable

*Other keyways and keying options available, including CX5 high security*
- Functions**

10 Passage	70 Classroom
17 Dummy, single	80 Storeroom
42 Privacy	82 Institution
53 Entry	
- Lever Styles** C–Curved return, H–Standard return, S–Straight; no return
- Finish** 26D–Satin chrome  
*Other finishes available by special order*

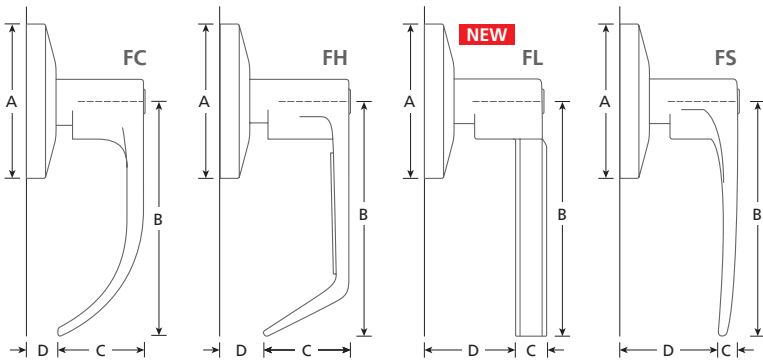
F	H	53	-	26D
SERIES	STYLE	FUNCTION		FINISH

## SELECTION GUIDE

SERIES	STYLE	FUNCTION	FINISH	/ CASE
F	C, H, L, S	10 Passage	26D	12
F	C, H, L, S	17 Dummy, single	26D	40
F	C, H, L, S	42 Privacy	26D	12
F	C, H, L, S	53 Entry ↔	26D	12
F	C, H, L, S	70 Classroom ↔	26D	12
F	C, H, L, S	80 Storeroom ↔	26D	12
F	C, H, S	82 Institution / utility ↔	26D	12

(1) OTHER FINISHES AND FUNCTIONS AVAILABLE, MINIMUM ORDER QUANTITIES AND/OR ADDITIONAL DELIVERY TIMES MAY BE REQUIRED

↔ KEYED FUNCTION; FULL KEYING SERVICES AVAILABLE



	A	B	C	D*
FC	3 5/16 (84.5)	4 1/2 (114)	1 7/8 (48)	1/2 (12.7)
FH	3 5/16 (84.5)	4 1/2 (114)	1 7/8 (48)	1/2 (12.7)
FL	3 5/16 (84.5)	4 11/16 (119)	3/4 (19)	1 27/32 (46.8)
FS	3 5/16 (84.5)	4 11/16 (119)	9/16 (14)	1 27/32 (46.8)

IN (MM) (\*) DIMENSION MAY VARY DUE TO DOOR THICKNESS.

## PARTS & ACCESSORIES



9106  
T-Strike, square corners:  
1 1/8 x 2 3/4" (28.5x70 mm)

9106NH  
T-Strike, no hole; square corners:  
1 1/8 x 2 3/4" (28.5x70 mm)



ASA-T  
ASA strike with adjustable tab

ASANH  
ASA strike, no hole



TL013  
Backset extension to 3 3/4" (95 mm);  
Use with 2 3/8" (60 mm) backset latch

TL014  
Backset extension to 5" (127 mm);  
Use with 2 3/4" (70 mm) backset latch



FH001  
Passage latch: 2 3/8" (60 mm) backset,  
1 1/8 x 2 1/4" (28.5x57 mm) faceplate

FH003  
Passage latch: 2 3/4" (70 mm) backset,  
1 1/8 x 2 1/4" (28.5x57 mm) faceplate

FH010  
Privacy latch: 2 3/8" (60 mm) backset,  
1 1/8 x 2 1/4" (28.5x57 mm) faceplate

FH002  
Privacy latch: 2 3/4" (70 mm) backset,  
1 1/8 x 2 1/4" (28.5x57 mm) faceplate



FH005  
Deadlatch: 2 3/8" (60 mm) backset,  
1 1/8 x 2 1/4" (28.5x57 mm) faceplate

FH004  
Deadlatch: 2 3/4" (70 mm) backset,  
1 1/8 x 2 1/4" (28.5x57 mm) faceplate

# 12 SERIES

## COMMERCIAL LOCKSET



- Certifications**
  - Conforms to ANSI/NHMA A156.2, series 4000, Grade 2
  - UL listed, 3hr fire-rating
  - Meets ADA requirements
  - 1 Year limited warranty
- Door Thickness**
  - 1 $\frac{3}{8}$ –1 $\frac{3}{4}$ " (35–44.5mm)
- Handing**
  - Non handed
- Backset**
  - 2 $\frac{3}{4}$ " (70 mm)
  - 2 $\frac{5}{8}$ " (60 mm) – available
  - 5" (127 mm) – available
- Spring Latch**
  - Stainless steel,  $\frac{1}{2}$ " (12.7 mm) throw
- Faceplate**
  - Mortise type, square corners
  - 1 $\frac{1}{8}$ x2 $\frac{1}{4}$ " (28.5x57 mm)
- Strike**
  - ASA Strike
- Trim**
  - Solid, pressure cast lever
  - Brass rose
  - Rose diameter: 3 $\frac{1}{32}$ " (85 mm)
- Chassis**
  - Concealed mounting plate and screws
  - Fixed security posts
  - Lever clutch release –option
- Preparation**
  - Fits ANSI A115.2 161 door prep
  - Cross bore: 2 $\frac{1}{8}$ " (54 mm)
  - Edge bore: 1" (25.4 mm)
- Cylinder**
  - Solid brass, 6-pin
  - Schlage "C" keyway, 2 keys
  - Removable, rekeyable

*Other keyways and keying options available.*
- Functions**


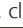
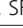
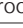
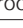
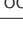
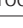
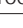


00 Dummy	70 Classroom
10 Passage	80 Storeroom
40 Privacy	89 Exit
53 Entry	
- Finish**
  - 26D–Satin chrome, 3–Polished brass


*Other finishes available by special order*

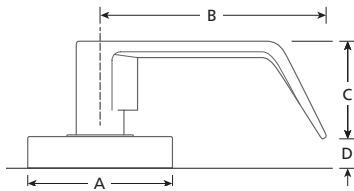
12-L	53	-C	C26D
SERIES	FUNCTION	OPTION*	FINISH


(\*) -C: CLUTCH RELEASE. SEE SELECTION GUIDE FOR DETAILS.

## SELECTION GUIDE

SERIES	FUNCTION	FINISH <sup>1</sup>	/CASE
12-L	00 Dummy	3, 26D	20
12-L	10 Passage	3, 26D	10
12-L	40 Privacy	3, 26D	10
12-L	53 Entry 	3, 26D	10
12-L	53 C Entry, clutch release 	3, 26D	10
12-L	53 IC Entry, SFIC, less core 	26D	10
12-L	70 Classroom 	3, 26D	10
12-L	70 C Classroom, clutch release 	3, 26D	10
12-L	70 IC Classroom SFIC, less core 	26D	10
12-L	80 Storeroom 	3, 26D	10
12-L	80 C Storeroom, clutch release 	3, 26D	10
12-L	80 IC Storeroom SFIC, less core 	26D	10
12-L	89 Exit 	26D	10

(1) OTHER FINISHES AND FUNCTIONS AVAILABLE, MINIMUM ORDER QUANTITIES AND/OR ADDITIONAL DELIVERY TIMES MAY BE REQUIRED.  
 KEYED FUNCTION; FULL KEYING SERVICES AVAILABLE.



		∅ A	B	C	D*
12-L		3 <sup>11</sup> / <sub>32</sub> (85)	4 <sup>5</sup> / <sub>8</sub> (117)	2 (51)	1/2 (12.7)

IN (MM) (\*) DIMENSION MAY VARY DUE TO DOOR THICKNESS.

## PARTS & ACCESSORIES



9106  
T-Strike, square corners:  
1<sup>1</sup>/<sub>8</sub>x2<sup>3</sup>/<sub>4</sub>" (28.5x70 mm)

9106NH  
T-Strike, no hole; square corners:  
1<sup>1</sup>/<sub>8</sub>x2<sup>3</sup>/<sub>4</sub>" (28.5x70 mm)



ASA-T  
ASA strike with adjustable tab  
ASANH  
ASA strike, no hole



EXT5  
Backset extension to 5" (127 mm);  
Use with 2<sup>3</sup>/<sub>4</sub>" (70 mm) backset latch



SL238  
Passage latch: 2<sup>3</sup>/<sub>8</sub>" (60 mm) backset  
1<sup>1</sup>/<sub>8</sub>x2<sup>1</sup>/<sub>4</sub>" (28.5x57 mm) faceplate

SL234  
Passage latch: 2<sup>3</sup>/<sub>4</sub>" (70 mm) backset  
1<sup>1</sup>/<sub>8</sub>x2<sup>1</sup>/<sub>4</sub>" (28.5x57 mm) faceplate



PL238  
Privacy latch: 2<sup>3</sup>/<sub>8</sub>" (60 mm) backset  
1<sup>1</sup>/<sub>8</sub>x2<sup>1</sup>/<sub>4</sub>" (28.5x57 mm) faceplate

PL234  
Privacy latch: 2<sup>3</sup>/<sub>4</sub>" (70 mm) backset  
1<sup>1</sup>/<sub>8</sub>x2<sup>1</sup>/<sub>4</sub>" (28.5x57 mm) faceplate

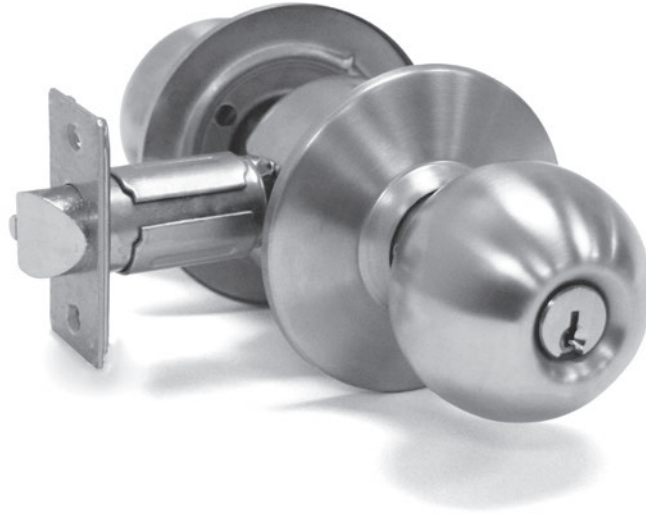


DL238  
Deadlatch: 2<sup>3</sup>/<sub>8</sub>" (60 mm) backset,  
1x2<sup>1</sup>/<sub>4</sub>" (25.4x57 mm) faceplate

DL234  
Deadlatch: 2<sup>3</sup>/<sub>4</sub>" (70 mm) backset  
1<sup>1</sup>/<sub>8</sub>x2<sup>1</sup>/<sub>4</sub>" (28.5x57 mm) faceplate

# 22 SERIES

## COMMERCIAL LOCKSET



- Type** • Cylindrical lock
- Certifications**
  - Conforms to ANSI/BHMA A156.2, Series 4000, Grade 2
  - UL listed, 3hr fire-rating
  - 1 Year limited warranty
- Door Thickness** • 1 $\frac{3}{8}$ –2" (35–51 mm)
- Handing** • Non handed
- Backset**
  - 2 $\frac{3}{4}$ " (70 mm)
  - 2 $\frac{3}{8}$ " (60 mm) – available
  - 5" (127 mm) – available
- Spring Latch** • Stainless steel,  $\frac{1}{2}$ " (12.7 mm) throw
- Faceplate**
  - Mortise type, square corners
  - 1 $\frac{1}{8}$ x2 $\frac{1}{4}$ " (28.5x57 mm)
- Strike** • ASA Strike
- Trim**
  - Steel or stainless steel knob\*
  - Steel or stainless steel rose\*
  - Rose diameter: 2  $\frac{15}{16}$ " (75 mm)

(\* ) Material dependant on finish.

- Chassis** • Concealed mounting plate and screws
  - Preparation**
    - Fits ANSI A115.2 161 door prep
    - Cross bore: 2 $\frac{1}{8}$ " (54 mm)
    - Edge bore: 1" (25.4 mm)
  - Cylinder**
    - Solid brass, 6-pin
    - Schlage "C" keyway, 2 keys
    - Removable, rekeyable

*Other keyways and keying options available.*
  - Functions**

00 Dummy	70 Classroom
10 Passage	80 Storeroom
40 Privacy	82 Institution/utility
53 Entry	
  - Finish** 3–Polished brass, 32D–Stainless steel
- Other finishes available by special order*

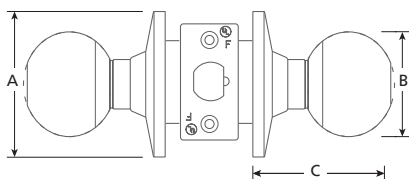
22	- B	53	- 32D
SERIES	STYLE	FUNCTION	FINISH

LC-LESS CORE (53 & 80)

## SELECTION GUIDE

SERIES	STYLE	FUNCTION	FINISH <sup>1</sup>	/ CASE
22	B	00 Dummy, single	3, 32D	50
22	B	10 Passage	3, 32D	20
22	B	40 Privacy	3, 32D	20
22	B	53 Entry ↔	3, 32D	20
22	B	70 Classroom ↔	3, 32D	20
22	B	70 IC Classroom SFIC, less core ↔	32D	20
22	B	80 Storeroom ↔	3, 32D	20
22	B	80 IC Storeroom SFIC, less core ↔	3, 32D	20
22	B	82 Institution / utility ↔	32D	20

(1) OTHER FINISHES AND FUNCTIONS AVAILABLE, MINIMUM ORDER QUANTITIES AND/OR ADDITIONAL DELIVERY TIMES MAY BE REQUIRED  
 ↔ KEYED FUNCTION; FULL KEYING SERVICES AVAILABLE



	A	B	C*
<b>22-B</b> (NON KEYED)	$2\frac{15}{16}$ (75)	$2\frac{1}{8}$ (54)	$2\frac{3}{4}-2\frac{15}{16}$ (70-75)
<b>22-B</b> (KEYED)			$2\frac{11}{16}-2\frac{7}{8}$ (68-73)

IN (MM) (\*) DIMENSION VARIES WITH DOOR THICKNESS.

## PARTS & ACCESSORIES



**9106**  
T-Strike, square corners:  
 $1\frac{1}{8} \times 2\frac{3}{4}$ " (28.5x70 mm)



**9106NH**  
T-Strike, no hole; square corners:  
 $1\frac{1}{8} \times 2\frac{3}{4}$ " (28.5x70 mm)



**EXT5**  
Backset extension to 5" (127 mm);  
Use with  $2\frac{3}{4}$ " (70 mm) backset latch



**SL238**  
Passage latch:  $2\frac{3}{8}$ " (60 mm) backset  
 $1\frac{1}{8} \times 2\frac{1}{4}$ " (28.5x57 mm) faceplate



**SL234**  
Passage latch:  $2\frac{3}{4}$ " (70 mm) backset  
 $1\frac{1}{8} \times 2\frac{1}{4}$ " (28.5x57 mm) faceplate



**PL238**  
Privacy latch:  $2\frac{3}{8}$ " (60 mm) backset  
 $1\frac{1}{8} \times 2\frac{1}{4}$ " (28.5x57 mm) faceplate

**PL234**  
Privacy latch:  $2\frac{3}{4}$ " (70 mm) backset  
 $1\frac{1}{8} \times 2\frac{1}{4}$ " (28.5x57 mm) faceplate

**DL238**  
Deadlatch:  $2\frac{3}{8}$ " (60 mm) backset,  
 $1\frac{1}{8} \times 2\frac{1}{4}$ " (28.5x57 mm) faceplate

**DL234**  
Deadlatch:  $2\frac{3}{4}$ " (70 mm) backset  
 $1\frac{1}{8} \times 2\frac{1}{4}$ " (28.5x57 mm) faceplate



**TLA 421**  
Privacy with indicator



- Certifications**
- Conforms to ANSI/BHMA A156.5, Grade 2
  - UL listed, 3hr fire-rating\*
  - 5 Year limited warranty

(\* Except privacy model 421)

- Door Thickness**
- 1 $\frac{3}{8}$ –1 $\frac{3}{4}$ " (35–44.5 mm)
  - SFIC Model: 1 $\frac{9}{16}$ –2" (40–51 mm)
  - Kit for 2 $\frac{1}{4}$ " (57 mm) – available

- Handing**
- Non handed

- Backset**
- 2 $\frac{3}{4}$ " (70 mm)
  - 2 $\frac{5}{8}$ " (60 mm) – available
  - 2 $\frac{3}{8}$ –2 $\frac{3}{4}$ " (60–70 mm) adjustable – available
  - 5" (127 mm) – available

- Deadbolt**
- Solid brass with hardened steel security pin
  - 1" (25.4 mm) throw

- Faceplate**
- Mortise type, square corners
  - 1 $\frac{1}{8}$ x2 $\frac{1}{4}$ " (29x57 mm)

- Strike**
- 2-piece security strike (wood/metal frame)
  - 1 $\frac{1}{8}$ x2 $\frac{3}{4}$ " (29x70 mm), square corners
  - Plastic dust-box

Other strikes available

- Chassis**
- Free-spinning cylinder collar
  - Steel cylinder housing
  - Exposed mounting screws

- Preparation**
- Cross bore: 1 $\frac{1}{2}$  or 2 $\frac{1}{8}$ " (38 mm or 54 mm)\*
  - Edge bore: 1" (25.4 mm)

(\* 1 $\frac{1}{2}$ " (38 mm) installation will negate Grade 2 conformity, but will retain fire-rating.

- Cylinder**
- Solid brass, 6-pin
  - Schlage "C" keyway, 2 keys
  - Removable, rekeyable
  - Small format interchangeable core (SFIC) model – available

Other keyways and keying options available, including CX5 high security.

- Functions**
- 421 Privacy with indicator
  - 51 Single cylinder, thumb-turn
  - 60 Double cylinder

- Finish**
- 19–Matte black, 26D–Satin chrome,
  - 3–Polished brass, 32D–Satin stainless steel

Other finishes available by special order

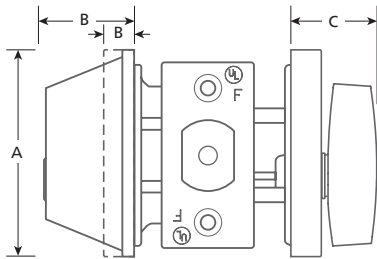
TLA	51	-	32D	-U
SERIES	FUNCTION		FINISH	OPTION <sup>(1)</sup>

(1) OPTIONS: 238–2 3/8IN (60MM) BACKSET -U–ADJUSTABLE BACKSET

## SELECTION GUIDE

SERIES	FUNCTION	FINISH <sup>1</sup>	/CASE
TLA	42I Privacy, with indicator*	26D, 32D	20
TLA	51 Single cylinder with thumb-turn ↔	19, 26D, 3, 32D	20
TLA	51-U Single cylinder with thumb-turn, adjustable backset option ↔	26D, 32D, 3	20
TLA	51IC Single cylinder with thumb-turn, SFIC (less core) ↔	26D, 32D	20
TLA	60 Double cylinder ↔	3, 32D	20

(1) OTHER FINISHES AND FUNCTIONS AVAILABLE, MINIMUM ORDER QUANTITIES AND/OR ADDITIONAL DELIVERY TIMES MAY BE REQUIRED  
 ↔ KEYED FUNCTION; FULL KEYING SERVICES AVAILABLE (\*) CANNOT ACCOMMODATE DOORS THICKER THAN 1-3/4IN (44.5 MM); NOT FIRE-RATED



	ø A	B	C
TLA	2 9/16 (65)	1 1/8 (29)	1 (25)
TLA 42I	2 9/16 (65)	1 1/32 (8.5)	1 (25)

IN (MM)

## PARTS & ACCESSORIES



9111  
Steel frame strike; square.  
1 1/8 x 2 3/4" (29 x 70 mm)



9118  
Wood frame strike; square.  
1 1/8 x 2 3/4" (29 x 70 mm)

9118R  
Wood frame strike; round.  
1 1/8 x 2 3/4" (29 x 70 mm)



9806  
CX5 high security SFIC core, 6 pin, 0 bitted

9807  
CX5 high security SFIC core, 7 pin, 0 bitted

CX5-TPIC  
Tailpiece for use with CX5 SFIC cores

CBI-BF7KD-26D  
BEST® F type SFIC core, 7 pin, keyed different



TL007  
Deadbolt: 2 3/8" (60 mm) backset,  
1 x 2 1/4" (25.4 x 57 mm) faceplate

TL008  
Deadbolt: 2 3/4" (70 mm) backset,  
1 1/8 x 2 1/4" (28.5 x 57 mm) faceplate

TL009  
Deadbolt: 5" (127 mm) backset,  
1 x 2 1/4" (25.4 x 57 mm) faceplate  
(not fire-rated)

TLA-LBU  
Deadbolt: 2 3/8-2 3/4" (60-70 mm) adjustable  
backset, 1 x 2 1/4" (25.4 x 57 mm) faceplate



TL020  
Plastic spacer for latches with  
1 x 2 1/4" (25.4 x 57 mm) faceplate



TLA85052  
Longer spindle and screw kit for 2 1/4" (57 mm)  
thick door. Cannot be used with TLA 42I  
Indicator model.