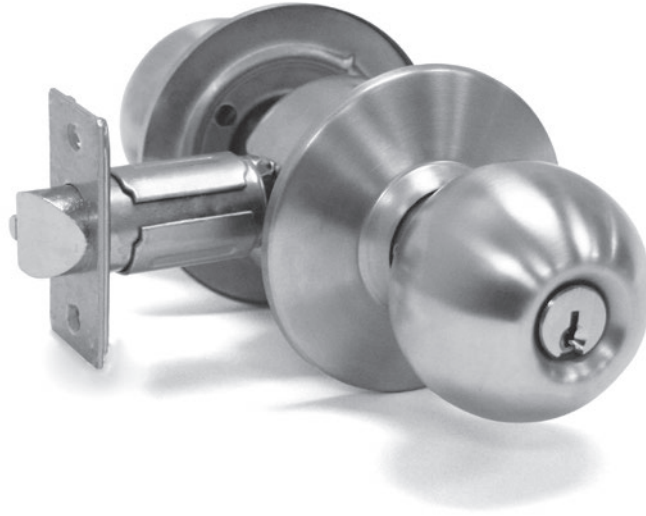


22 SERIES

COMMERCIAL LOCKSET



- Type** • Cylindrical lock
- Certifications** • Conforms to ANSI/BHMA A156.2, Series 4000, Grade 2
• UL listed, 3hr fire-rating
• 1 Year limited warranty
- Door Thickness** • 1 $\frac{3}{8}$ –2" (35–51 mm)
- Handing** • Non handed
- Backset** • 2 $\frac{3}{4}$ " (70 mm)
• 2 $\frac{3}{8}$ " (60 mm) – available
• 5" (127 mm) – available
- Spring Latch** • Stainless steel, $\frac{1}{2}$ " (12.7 mm) throw
- Faceplate** • Mortise type, square corners
• 1 $\frac{1}{8}$ x2 $\frac{1}{4}$ " (28.5x57 mm)
- Strike** • ASA Strike
- Trim** • Steel or stainless steel knob*
• Steel or stainless steel rose*
• Rose diameter: 2 $\frac{15}{16}$ " (75 mm)

(*) Material dependant on finish.

- Chassis** • Concealed mounting plate and screws
- Preparation** • Fits ANSI A115.2 161 door prep
• Cross bore: 2 $\frac{1}{8}$ " (54 mm)
• Edge bore: 1" (25.4 mm)
- Cylinder** • Solid brass, 6-pin
• Schlage "C" keyway, 2 keys
• Removable, rekeyable
Other keyways and keying options available.
- Functions**
- | | |
|------------|------------------------|
| 00 Dummy | 70 Classroom |
| 10 Passage | 80 Storeroom |
| 40 Privacy | 82 Institution/utility |
| 53 Entry | |
- Finish** 3–Polished brass, 32D–Stainless steel
Other finishes available by special order

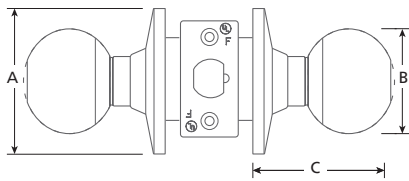
22	-	B	53	-	32D
SERIES		STYLE	FUNCTION		FINISH

LC-LESS CORE (53 & 80)

SELECTION GUIDE

SERIES	STYLE	FUNCTION	FINISH ¹	/ CASE
22	B	00 Dummy, single	3, 32D	50
22	B	10 Passage	3, 32D	20
22	B	40 Privacy	3, 32D	20
22	B	53 Entry ↔	3, 32D	20
22	B	70 Classroom ↔	3, 32D	20
22	B	70 IC Classroom SFIC, less core ↔	32D	20
22	B	80 Storeroom ↔	3, 32D	20
22	B	80 IC Storeroom SFIC, less core ↔	3, 32D	20
22	B	82 Institution / utility ↔	32D	20

(1) OTHER FINISHES AND FUNCTIONS AVAILABLE, MINIMUM ORDER QUANTITIES AND/OR ADDITIONAL DELIVERY TIMES MAY BE REQUIRED
 ↔ KEYED FUNCTION; FULL KEYING SERVICES AVAILABLE



	A	B	C*
22-B (NON KEYED)	2 ¹⁵ / ₁₆ (75)	2 ¹ / ₈ (54)	2 ³ / ₄ -2 ¹⁵ / ₁₆ (70-75)
22-B (KEYED)			2 ¹¹ / ₁₆ -2 ⁷ / ₈ (68-73)

IN (MM) (*) DIMENSION VARIES WITH DOOR THICKNESS.

PARTS & ACCESSORIES



9106
T-Strike, square corners:
1¹/₈x2³/₄" (28.5x70 mm)

9106NH
T-Strike, no hole; square corners:
1¹/₈x2³/₄" (28.5x70 mm)



ASA-T
ASA strike with adjustable tab

ASANH
ASA strike, no hole



EXT5
Backset extension to 5" (127 mm);
Use with 2³/₄" (70 mm) backset latch



SL238
Passage latch: 2³/₈" (60 mm) backset
1¹/₈x2¹/₄" (28.5x57 mm) faceplate



SL234
Passage latch: 2³/₄" (70 mm) backset
1¹/₈x2¹/₄" (28.5x57 mm) faceplate



PL238
Privacy latch: 2³/₈" (60 mm) backset
1¹/₈x2¹/₄" (28.5x57 mm) faceplate

PL234
Privacy latch: 2³/₄" (70 mm) backset
1¹/₈x2¹/₄" (28.5x57 mm) faceplate

DL238
Deadlatch: 2³/₈" (60 mm) backset,
1¹/₈x2¹/₄" (28.5x57 mm) faceplate

DL234
Deadlatch: 2³/₄" (70 mm) backset
1¹/₈x2¹/₄" (28.5x57 mm) faceplate