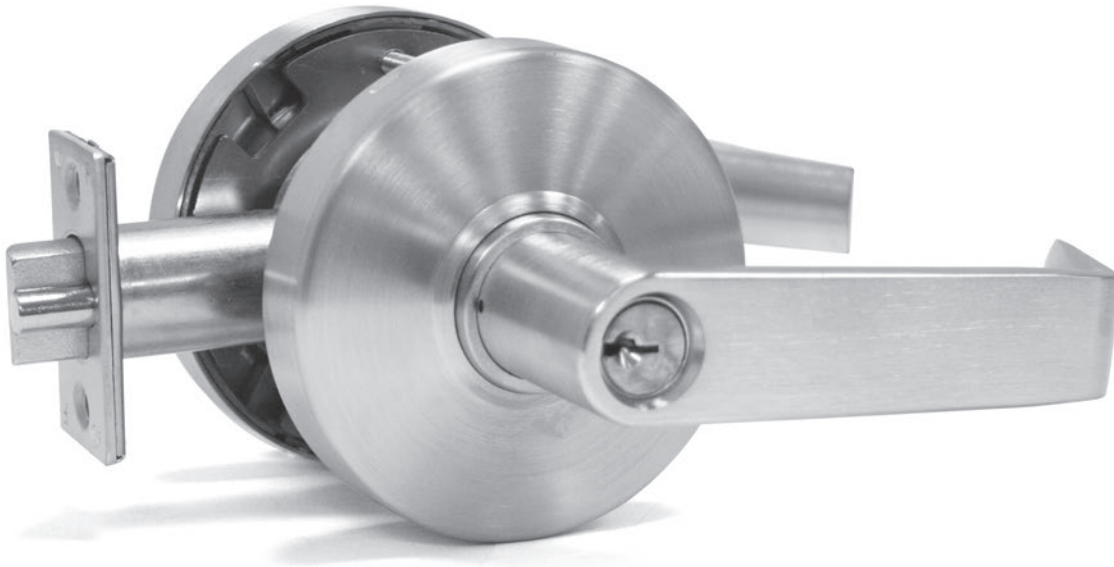


G1L SERIES

COMMERCIAL LOCKSET



- Certifications**
- Conforms to ANSI/NHMA A156.2, Grade 1
 - UL listed, 3hr fire-rating
 - Meets ADA requirements
 - 5 Year limited warranty
- Door Thickness**
- 1½–2" (38–51mm)
- Handing**
- Non handed
- Backset**
- 2¾" (70 mm)
- Spring Latch**
- Stainless steel, ½" (12.7 mm) throw
- Faceplate**
- Mortise type, square corners
 - 1½x2¼" (28.5x57 mm)
- Strike**
- ASA Strike
- Trim**
- Solid, pressure cast lever
 - Brass rose
 - Rose diameter: 3¾" (90 mm)
- Chassis**
- Concealed mounting plate and screws
 - Fixed security posts
 - Lever clutch release

- Preparation**
- Fits ANSI A115.2 161 door prep
 - Cross bore: 2½" (54 mm)
 - Edge bore: 1" (25.4 mm)
- Cylinder**
- Solid brass, 6-pin
 - Schlage "C" keyway, 2 keys
 - Removable, rekeyable
 - Small format interchangeable core (SFIC) model – available*

Other keyways and keying options available, including CX5 high security. () BEST® and CX5® cores sold separately.*

Functions	10 Passage	70 Classroom
	40 Privacy	80 Storeroom
	53 Entry	

Finish 26D–Satin chrome

Other finishes available by special order

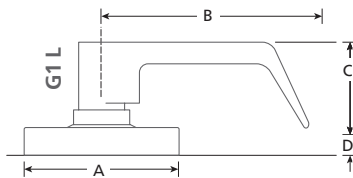
G1L	10	–	26D
SERIES	FUNCTION		FINISH

SELECTION GUIDE

SERIES	FUNCTION	FINISH ¹	/CASE
G1L	10 Passage	26D	10
G1L	40 Privacy	26D	10
G1L	53 Entry ↔	26D	10
G1L	53IC Entry SFIC ↔	26D	10
G1L	70 Classroom ↔	26D	10
G1L	70IC Classroom SFIC ↔	26D	10
G1L	80 Storeroom ↔	26D	10
G1L	80IC Storeroom SFIC, less core ↔	26D	10

(1) OTHER FINISHES AND FUNCTIONS AVAILABLE, MINIMUM ORDER QUANTITIES AND/OR ADDITIONAL DELIVERY TIMES MAY BE REQUIRED.

↔ KEYED FUNCTION; FULL KEYING SERVICES AVAILABLE.



	A	B	C	D*
G1L	3 ⁹ / ₁₆ (90)	4 ⁵ / ₈ (117)	2 (51)	1/2 (12.7)

IN (MM) (*) DIMENSION MAY VARY DUE TO DOOR THICKNESS.

PARTS & ACCESSORIES



STRIKE-T
T-Strike, square corners:
1¹/₈x2³/₄" (28.5x70 mm)



ASA-T
ASA strike with adjustable tab



9806
CX5 high security SFIC core, 6 pin, 0 bitted

9807
CX5 high security SFIC core, 7 pin, 0 bitted

CBI-BF7KD-26D
BEST® F type SFIC core, 7 pin, keyed different



G1SL234
Passage latch: 2³/₄" (70 mm) backset
1¹/₈x2¹/₄" (28.5x57 mm) faceplate



G1DL234
Deadlatch: 2³/₄" (70 mm) backset
1¹/₈x2¹/₄" (28.5x57 mm) faceplate