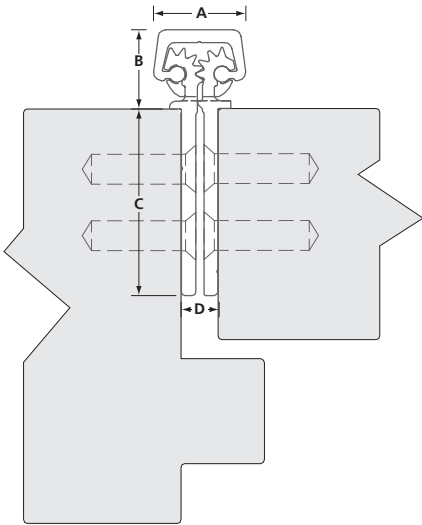


CONTINUOUS GEARED HINGES

FULL CONCEALED / FULL SURFACE

FULL CONCEALED ALUMINUM GEARED HINGES

A110



- UL fire rated
- Delrin bearings, heavy duty
- No door inset, flush mount
- 48" (1219mm) door width maximum
- 450 lbs (204 kg) door weight maximum
- Undercut Tek screws included
- Power transfer ready model available (PT)
- 1000 lbs (454 kg) high capacity model available for lead lined doors

STANDARD LENGTHS

Inch: 79 / 83 / 85 / 95 / 120
MM: 2006 / 2108 / 2159 / 2413 / 3048

FINISHES

C—Clear anodized
D—Dark bronze anodized

Available in a variety of finishes, models, options and lengths
— please contact for details

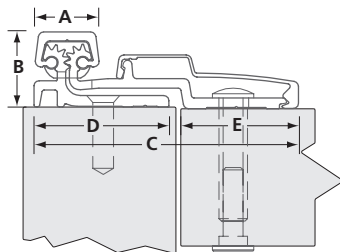
A110	HD	C	095	-PT
MODEL	TYPE	FINISH	LENGTH	OPTION
HD: HEAVY DUTY LL: HIGH CAPACITY PT: POWER TRANSFER				

MODEL	A	B	C	D	E	CAPACITY ¹
A110	$\frac{25}{32}$ (19.8)	$\frac{21}{32}$ (9.5)	$1\frac{9}{16}$ (39.7)	$\frac{5}{16}$ (7.9)	—	450 (204)

IN(MM) (1) LBS (KG) - HIGH CAPACITY MODEL AVAILABLE

FULL SURFACE ALUMINUM GEARED HINGES (SWING CLEAR)

A210



- UL fire rated
- Delrin bearings, heavy duty
- Swing clear application
- No door inset, flush mount
- 48" (1219mm) door width maximum
- 450 lbs (204 kg) door weight maximum
- Undercut Tek screws and sex-nut bolts included

STANDARD LENGTHS

Inch: 79 / 83 / 85 / 95 / 120
MM: 2006 / 2108 / 2159 / 2413 / 3048

FINISHES

C—Clear anodized
D—Dark bronze anodized

Available in a variety of finishes, models, options and lengths
— please contact for details

A210	HD	C	083
MODEL	TYPE	FINISH	LENGTH

MODEL	A	B	C	D	E	CAPACITY ¹
A210	$\frac{25}{32}$ (19.8)	$\frac{29}{32}$ (23)	$3\frac{5}{32}$ (80.6)	$1\frac{5}{8}$ (41.3)	$1\frac{35}{64}$ (39.3)	450 (204)

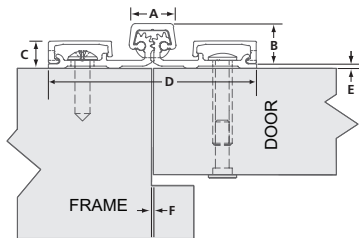
(1) LBS (KG) OTHER HIGH CAPACITY MODELS AVAILABLE

CONTINUOUS GEARED HINGES

FULL SURFACE

FULL SURFACE ALUMINUM GEARED HINGES

A571



- UL fire rated
- Delrin bearings, heavy duty
- For bi-fold applications
- 1/16" (1.6 mm) door inset
- 48" (1219 mm) door width maximum
- 450 lbs (204 kg) door weight maximum
- Undercut Tek screws and sex-nut bolts included

STANDARD LENGTHS

Inch: 79 / 83 / 85 / 95 / 120
MM: 2006 / 2108 / 2159 / 2413 / 3048

FINISHES

C—Clear anodized
D—Dark bronze anodized

Available in a variety of finishes, models, options and lengths
— please contact for details

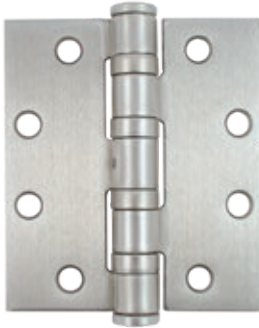
A571	HD	C	083
MODEL	TYPE	FINISH	LENGTH

MODEL	A	B	C	D	E ¹	F	CAPACITY ²
A571	23/32 (18.3)	23/32 (18.3)	7/16 (11.1)	3 13/32 (86.5)	1/16 (1.6)	1/32 (0.8)	450 (204)

IN(MM) (1) DOOR INSET (2) LBS (KG)

BB 1068/BB 1099 SERIES

HEAVY DUTY BALL BEARING TEMPLATE HINGES



- Heavy weight, full mortise
- 5 knuckles, 4 ball bearings
- Steel or stainless steel hinge and pin
- Conforms to ANSI/BHMA A156.1
- ANSI/BHMA A156.7 template hole pattern

- Non-handed
- Flat tips with knock-out bottom
- Wood screws and undercut machine screws included

MODELS

BB1068: Steel hinge and pin

BB1099: Stainless steel hinge and pin

OPTIONS

N: Non-removable pin (NRP)

BB1068	-	4545	-	26D	-	N
MODEL	SIZE	FINISH	OPTION			

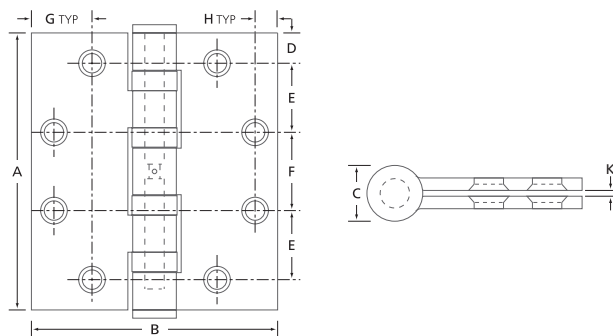
SIZE	INCHES	MM	GAUGE	HOLES	SCREWS INCLUDED		QTY ¹
					MACHINE	WOOD	
4545	4½ x 4½	114.3 x 114.3	0.180	8	#12-24 x ½	#12 x 1¼	3/48
545	5 x 4½	127 x 114.3	0.190	8	#12-24 x ½	#12 x 1¼	3/48
55	5 x 5	127 x 127	0.190	8	#12-24 x ½	#12 x 1¼	3/48

(1) 3/48 : QUANTITY PER BOX / QUANTITY PER CASE. HINGES NOT SOLD INDIVIDUALLY.

P	26D	32D*
PRIME COATED	SATIN CHROME	SATIN STAINLESS STEEL

OTHER SIZES AND FINISHES AVAILABLE BY SPECIAL ORDER, PLEASE CONTACT FOR DETAILS.

(*) 304 STAINLESS STEEL, BB1099-4545 ONLY



SIZE	A	B	C	D	E	F	G	H	K
4545	4½ (114.3)	4½ (114.3)	¾ (19)	½ (12.7)	1⅛ (28.6)	1⅞ (31)	1 (25.4)	¾ (9.5)	⅛ (1.8)
545	5 (127.0)	4½ (114.3)	¾ (19)	½ (12.7)	1⅛ (28.6)	1⅞ (31)	1 (25.4)	¾ (9.5)	⅛ (1.8)
55	5 (127.0)	5 (127.0)	¾ (19)	½ (12.7)	1¼ (31.8)	1⅞ (37.7)	1 (25.4)	¾ (9.5)	⅛ (1.8)

DIMENSIONS IN INCHES (MILLIMETRES) AS PER ANSI A156.7

BB1079/BB1091 SERIES

BALL BEARING TEMPLATE HINGES



- Standard weight, full mortise
- 5 knuckles, 2 ball bearings
- Steel or stainless steel hinge and pin
- Conforms to ANSI/BHMA A156.1
- ANSI/BHMA A156.7 template hole pattern
- Non-handed
- Flat tips with knock-out bottom
- Wood and undercut machine screws included

MODELS

- BB1079: Steel hinge and pin
- BB1091: Stainless steel hinge and pin

OPTIONS

- N: Non-removable pin (NRP)

BB1079 - 454 - 26D - N

MODEL	SIZE	FINISH	OPTION
BB1079	454	26D	N

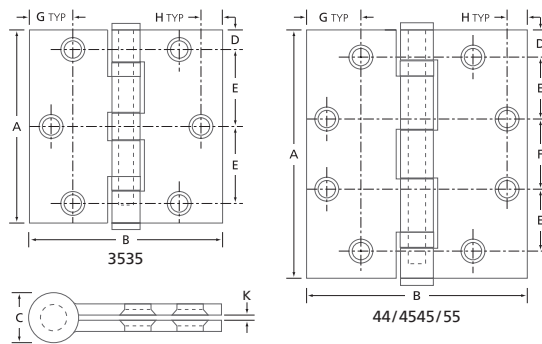
SIZE	INCHES	MM	GAUGE	HOLES	SCREWS INCLUDED		QTY ¹
					MACHINE	WOOD	
3535	3 1/2 x 3 1/2	88.9 x 88.9	0.123	6	#10-24 x 1/2	#9 x 1	3/48
44	4 x 4	101.6 x 101.6	0.130	8	#12-24 x 1/2	#12 x 1 1/4	3/48
4545	4 1/2 x 4 1/2	114.3 x 114.3	0.134	8	#12-24 x 1/2	#12 x 1 1/4	3/48
55	5 x 5	127 x 127	0.146	8	#12-24 x 1/2	#12 x 1 1/4	3/48

(1) 3/48 : QUANTITY PER BOX / QUANTITY PER CASE. HINGES NOT SOLD INDIVIDUALLY.

P	15	26D	3	32D*
PRIME COATED	SATIN NICKEL	SATIN CHROME	POLISHED BRASS	SATIN STAINLESS STEEL

OTHER SIZES AND FINISHES AVAILABLE BY SPECIAL ORDER, PLEASE CONTACT FOR DETAILS.

(*) 304 STAINLESS STEEL, BB1091-4545 ONLY

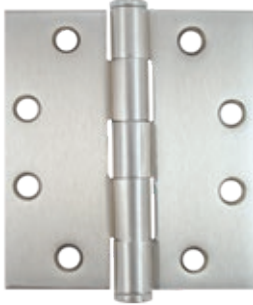


SIZE	A	B	C	D	E	F	G	H	K
3535	3 1/2 (88.9)	3 1/2 (88.9)	1/2 (12.7)	23/64 (9.1)	125/64 (35.4)	—	11/16 (17.5)	23/64 (9.1)	1/16 (1.6)
44	4 (101.6)	4 (101.6)	9/16 (14)	1/2 (12.7)	1 (25.5)	31/32 (24.6)	3/4 (19.1)	3/8 (9.5)	1/16 (1.6)
4545	4 1/2 (114.3)	4 1/2 (114.3)	19/32 (15.2)	1/2 (12.7)	1 1/8 (28.6)	1 15/64 (31)	1 (25.4)	3/8 (9.5)	1/16 (1.6)
55	5 (127)	5 (127)	5/8 (15.9)	1/2 (12.7)	1 1/4 (31.8)	1 31/64 (37.7)	1 (25.4)	3/8 (9.5)	1/16 (1.6)

DIMENSIONS IN INCHES (MILLIMETRES) AS PER ANSI A156.7

1079/1091 SERIES

PLAIN BEARING TEMPLATE HINGE



- Standard weight, full mortise
- 5 knuckles, plain bearing
- Steel or stainless steel hinge and pin
- ANSI/BHMA A156.7 template hole pattern
- Non-handed
- Flat tips with knock-out bottom
- Wood and undercut machine screws included

MODELS

- 1079: Steel hinge and pin
- 1091: Stainless steel hinge and pin

OPTIONS

- N: Non-removable pin (NRP)

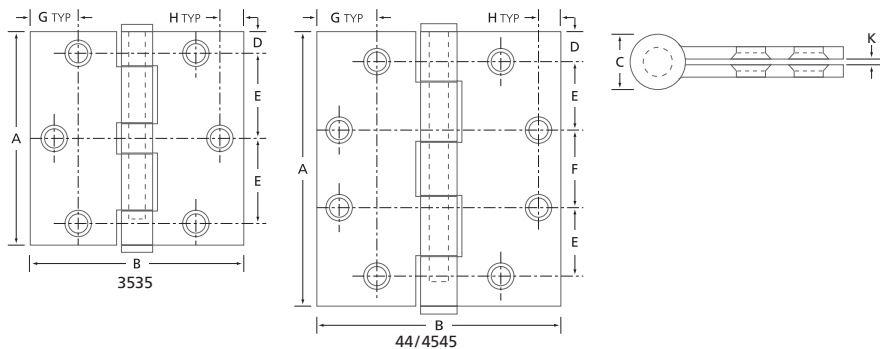
1079	-	44	-	26D	-	N
MODEL	SIZE	FINISH	OPTION			

SIZE	INCHES	MM	GAUGE	HOLES	SCREWS INCLUDED		QTY ¹
					MACHINE	WOOD	
3535	3 1/2 x 3 1/2	88.9 x 88.9	0.125	6	#10-24 x 1/2	#9 x 1	3/48
44	4 x 4	101.6 x 101.6	0.130	8	#12-24 x 1/2	#12 x 1 1/4	3/48
4545	4 1/2 x 4 1/2	114.3 x 114.3	0.134	8	#12-24 x 1/2	#12 x 1 1/4	3/48

(1) 3/48 : QUANTITY PER BOX / QUANTITY PER CASE. HINGES NOT SOLD INDIVIDUALLY.

P	26D	32D*
PRIME COATED	POLISHED CHROME	SATIN STAINLESS STEEL

OTHER SIZES AND FINISHES AVAILABLE BY SPECIAL ORDER, PLEASE CONTACT FOR DETAILS.
 (*) 304 STAINLESS STEEL, 1091-4545 ONLY



SIZE	A	B	C	D	E	F	G	H	K
3535	3 1/2 (88.9)	3 1/2 (88.9)	1/2 (12.7)	23/64 (9.1)	1 25/64 (35.4)	—	11/16 (17.5)	23/64 (9.1)	1/16 (1.6)
44	4 (101.6)	4 (101.6)	9/16 (14)	1/2 (12.7)	1 (25.5)	31/32 (24.6)	3/4 (19.1)	3/8 (9.5)	1/16 (1.6)
4545	4 1/2 (114.3)	4 1/2 (114.3)	19/32 (15.2)	1/2 (12.7)	1 1/8 (28.6)	1 15/64 (31)	1 (25.4)	3/8 (9.5)	1/16 (1.6)

DIMENSIONS IN INCHES (MILLIMETRES) AS PER ANSI A156.7



- Standard weight, half mortise
- 5 knuckles, 2 ball bearings
- Steel with steel pin
- ANSI/BHMA A156.7 template hole pattern
- Handed
- Flat tips with knock-out bottom
- Non-removable pin (NRP)
- High quality primer coat finish (CP)

B77	CP	NRP	-L
MODEL	FINISH		HAND

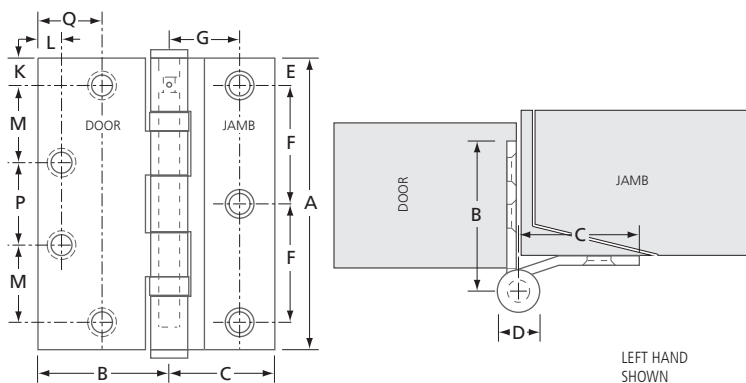
-L : LEFT HAND -R : RIGHT HAND

MODEL	HINGE SIZE		GAUGE	HOLES	SCREWS INCLUDED		QTY ¹
	INCHES	MM			MACHINE	WOOD	
BB77	4½	114.3	0.134	7	#12-24x½(x3)	#12x1¼(x4)	3/60

(1) 3/60 : QUANTITY PER BOX / QUANTITY PER CASE. HINGES NOT SOLD INDIVIDUALLY.

CP
PRIME COATED

OTHER SIZES AND FINISHES AVAILABLE BY SPECIAL ORDER, PLEASE CONTACT FOR DETAILS.



MODEL	A	B	C	D	E	F	G	H	K	L	M	P	Q
B77	4½ (114.3)	2 (52.4)	1½ (38)	9/16 (14.2)	½ (12.7)	1¾ (44.5)	1 (25.4)	—	39/64 (13)	3/8 (9.5)	1½ (28.6)	1½ (31.4)	1 (25.4)

IN (MM)

BB1067 SERIES

HALF MORTISE TEMPLATE HINGE



- Standard weight, half mortise
- 5 knuckles, 2 ball bearings
- Steel with steel pin
- ANSI/BHMA A156.7 template hole pattern
- Handed
- Flat tips with knock-out bottom
- Wood and undercut machine screws and through-bolts included

OPTIONS

N: Non-removable pin (NRP)

BB1067	L	-	45	-	P	-	N
MODEL	HAND	SIZE	FINISH				

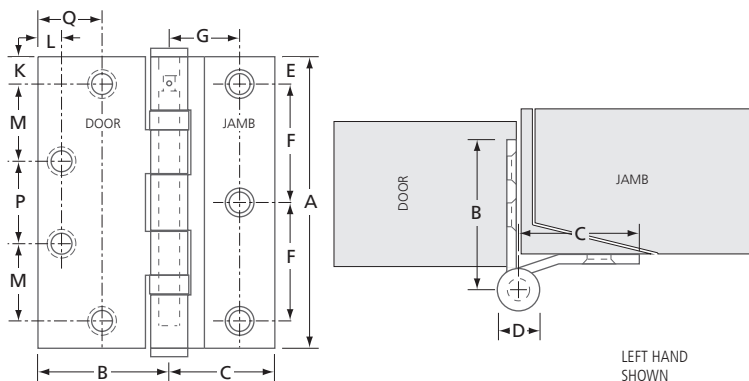
L : LEFT HAND R : RIGHT HAND

MODEL	HINGE SIZE		GAUGE	HOLES	BOLT / SCREWS INCLUDED		QTY ¹
	INCHES	MM			BOLT	WOOD	
BB1067 45	4 1/2	114.3	0.134	7	#1/4x20 (x3)*	#12x1 1/4(x4)	3/48

(*) FOR DOORS 1 3/4" (45 MM) THICK (1) 3/48 : QUANTITY PER BOX / QUANTITY PER CASE. HINGES NOT SOLD INDIVIDUALLY.

P
PRIME COATED

OTHER SIZES AND FINISHES AVAILABLE BY SPECIAL ORDER, PLEASE CONTACT FOR DETAILS.



MODEL	A	B	C	D	E	F	G	H	K	L	M	P	Q
BB1067	4 1/2	2 1/16	1 1/2	19/32	1/2	1 3/4	1	—	1/2	3/8	1 1/8	1 7/32	1
	(114.3)	(52.4)	(38)	(15)	(12.7)	(44.5)	(25.4)		(12.7)	(9.5)	(28.6)	(31.3)	(25.4)

IN (MM)

BB1073 SERIES

HALF SURFACE TEMPLATE HINGE



- Standard weight, half surface
- 5 knuckles, 2 ball bearings
- Steel with steel pin
- ANSI/BHMA A156.7 template hole pattern
- Handed
- Flat tips with knock-out bottom
- Non-removable pin (NRP)
- High quality primer coat finish (P)

BB1073	L	-	45	-	P	-	N
MODEL	HAND	SIZE	FINISH				

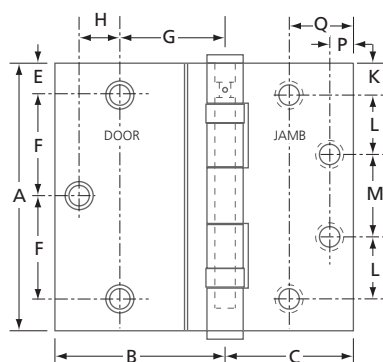
L : LEFT HAND R : RIGHT HAND

MODEL	HINGE SIZE		GAUGE	HOLES	BOLT / SCREWS INCLUDED		QTY ¹
	INCHES	MM			BOLT	WOOD	
BB1073 45	4 1/2	114.3	0.134	7	#1/4x20 (x3)*	#12x1 1/4(x4)	3/48
BB1073 50	5	127	0.146	8	#1/4x20 (x3)*	#12x1 1/4(x4)	3/48

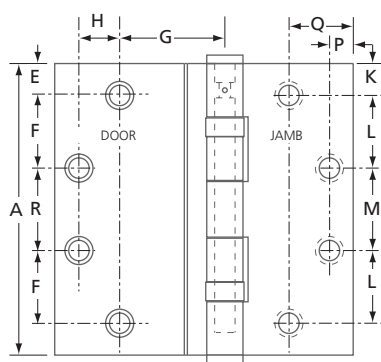
(*) FOR DOORS 1 3/4" (45 MM) THICK (1) 3/48 : QUANTITY PER BOX / QUANTITY PER CASE. HINGES NOT SOLD INDIVIDUALLY.

P
PRIME COATED

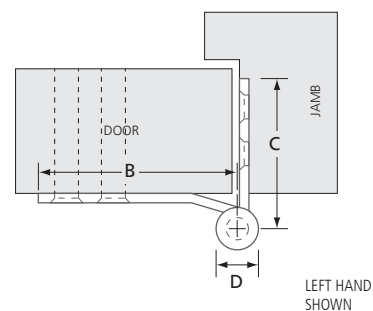
OTHER SIZES AND FINISHES AVAILABLE BY SPECIAL ORDER, PLEASE CONTACT FOR DETAILS.



SIZE 45



SIZE 50



SIZE	A	B	C	D	E	F	G	H	K	L	M	P	Q	R
45	4 1/2 (114.3)	2 9/16 (65)	2 1/16 (52.4)	39/64 (15.4)	1/2 (12.7)	1 3/4 (44.5)	1 1/2 (38.1)	9/16 (14.3)	1/2 (12.7)	1 1/8 (28.6)	1 7/32 (31.3)	3/8 (9.5)	1 (25.4)	—
50	5 (127)	2 7/8 (73.0)	2 1/16 (52.4)	5/8 (15.8)	1/2 (12.7)	1 1/4 (31.8)	1 1/2 (38.1)	7/8 (22.2)	1/2 (12.7)	1 1/4 (31.8)	1 31/64 (37.7)	3/8 (9.5)	1 (25.4)	1 1/2 (38.1)

IN(MM)



- Standard weight
- 5 knuckles, 2 ball bearings
- Steel with non-rising steel pin
- ANSI/BHMA A156.7 template hole pattern
- Allows door to fully clear door opening
- For non-bevelled (square) doors
- Handed, field reversible
- Flat tips with knock-out bottom

148	-	15	-	454	-	L
MODEL	FINISH	SIZE	HAND			

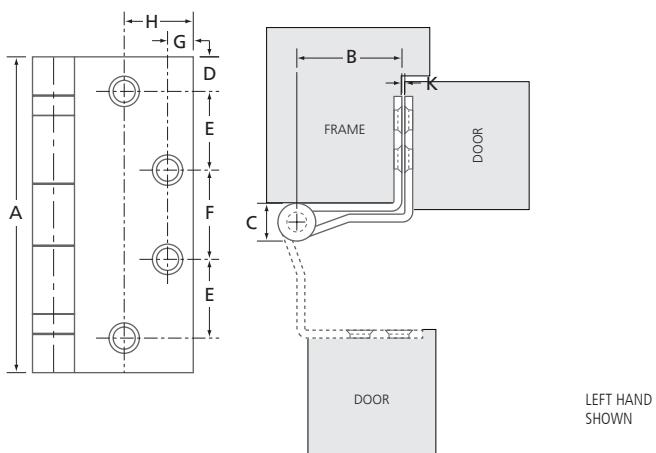
L : LEFT HAND R : RIGHT HAND

SIZE	INCHES	MM	GAUGE	HOLES	SCREWS INCLUDED		QTY ¹
					MACHINE	WOOD	
454	4 1/2 x 4	114.3 x 101.6	0.134	8	#12-24 x 1/2	#12 x 1 1/4	3/30

(1) 3/30 : QUANTITY PER BOX / QUANTITY PER CASE. HINGES NOT SOLD INDIVIDUALLY.
OTHER FINISHES AVAILABLE BY SPECIAL ORDER, PLEASE CONTACT FOR DETAILS.

15
SATIN NICKEL

OTHER SIZES AND FINISHES AVAILABLE BY SPECIAL ORDER, PLEASE CONTACT FOR DETAILS.



SIZE	A	B	C	D	E	F	G	H	K
454	4 1/2 (114.3)	1 5/8 (41.3)	19/32 (15.2)	1/2 (12.9)	1 1/8 (28.6)	1 15/64 (31.3)	3/8 (9.5)	1 (25.4)	1/16 (1.6)

IN(MM)

LEFT HAND
SHOWN

SP1060/SP1061 SERIES

SINGLE ACTING TEMPLATE SPRING HINGES



- Standard weight, full mortise
- 3 knuckle, 2 anti-friction nylon bearings
- Steel or stainless steel
- ANSI/BHMA A156.7 template hole pattern
- UL listed *

- Non-handed
- Adjustable spring tension (tool included)
- Wood and/or undercut machine screws included

MODELS

- SP1060: Steel hinge
- SP1061: Stainless steel hinge

NOTE: For best results, use with ball bearing hinges of the same size.

(*) Minimum of two (2) spring hinges per fire-rated door



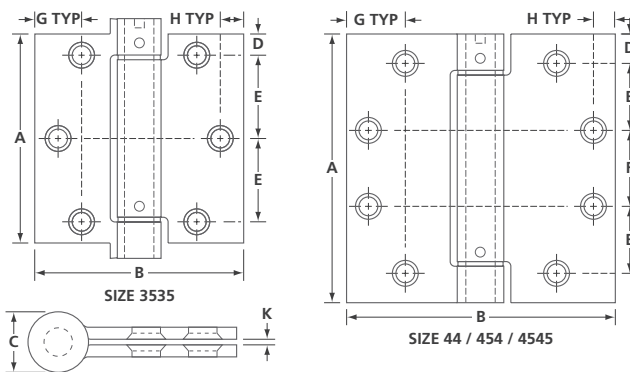
SP1060 - 4545 - 26D
MODEL SIZE FINISH

SIZE	INCHES	MM	GAUGE	HOLES	SCREWS INCLUDED MACHINE	WOOD	QTY ¹
3535	3 1/2 x 3 1/2	88.9 x 88.9	0.100	6	#10-24 x 1/2	#9 x 3/4	2 / 48
44	4 x 4	101.6 x 101.6	0.134	8	#10-24 x 1/2	#9 x 3/4	2 / 48
4545	4 1/2 x 4 1/2	114.3 x 114.3	0.134	8	#12-24 x 1/2	#12 x 1 1/4	2 / 40

(1) 2/48 : QUANTITY PER BOX / QUANTITY PER CASE. HINGES NOT SOLD INDIVIDUALLY.

P	26D	3	32D*
PRIME COATED	SATIN CHROME	POLISHED BRASS	SATIN STAINLESS STEEL

OTHER FINISHES AVAILABLE, MAY REQUIRE SPECIAL ORDER AND/OR ADDITIONAL LEAD TIME.
ALL STEEL HINGES ARE ANSI K81071F (*) 304 STAINLESS STEEL / ANSI K51071F, SP1061-4545 ONLY



SIZE	MAXIMUM DOOR WT. ¹	SPRING HINGES	BUTT HINGES ²
3535	50 (22.7 kg)	2	1
	70 (31.8 kg)	2	1
	90 (40.9)	3	—
44	60 (27.2)	2	1
	85 (38.6)	2	1
	110 (50.0)	3	—
4545	70 (31.8)	2	1
	115 (52.3)	2	1
	150 (68.2)	3	—

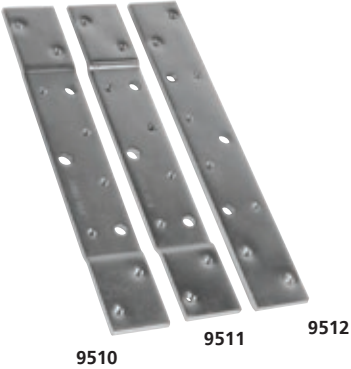
(1) LB(KG) MAXIMUM SIZE: 48 X 90" (1219 X 2286 MM).
MAX. FIRE DOOR SIZE: 36 X 84" (914 X 2134 MM).
(2) FOR BEST RESULTS, USE BB1079 HINGES.

SIZE	A	B	C	D	E	F	G	H	K
3535	3 1/2 (88.9)	3 1/2 (88.9)	45/64 (18)	1 1/32 (9.0)	1 13/32 (35.4)	—	1 1/16 (17.5)	23/64 (9.1)	1/16 (1.6)
44	4 (101.6)	4 (101.6)	25/32 (19.6)	1/2 (13)	1 (25.5)	3 1/32 (24.6)	3/4 (19.1)	3/8 (9.5)	1/16 (1.6)
4545	4 1/2 (114.3)	4 1/2 (114.3)	25/32 (19.6)	1/2 (12.9)	1 1/8 (28.6)	1 7/32 (31.3)	1 (25.4)	3/8 (9.5)	1/16 (1.6)

DIMENSIONS IN INCHES (MILLIMETRES) AS PER ANSI A156.7

PRO SERIES

REINFORCEMENT & FILLER PLATES



- Steel reinforcement plate
- ANSI/BHMA A156.7 template hole pattern
- Available with various offsets
- Holes accommodate #12-24 screws
- Fastening hardware NOT included

MODEL	FINISH	DESCRIPTION	QTY ⁽¹⁾
9510	Zinc plated	8 x 1 ³ / ₁₆ " (201 x 30 mm) Template reinforcement plate for 4 ¹ / ₂ " (114.3) hinge, with ³ / ₃₂ " (2.5) offset	12/120
9511	Zinc plated	8 x 1 ³ / ₁₆ " (201 x 30 mm) Template reinforcement plate for 4 ¹ / ₂ " (114.3 mm) hinge, with ¹ / ₁₆ " (1.2 mm) offset	12/120
9512	Zinc plated	8 x 1 ³ / ₁₆ " (201 x 30 mm) Template reinforcement plate for 4 ¹ / ₂ " (114.3 mm) hinge, flat, no offset	12/120

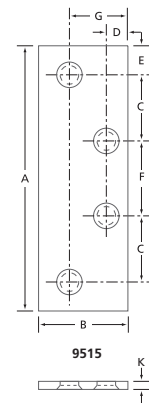
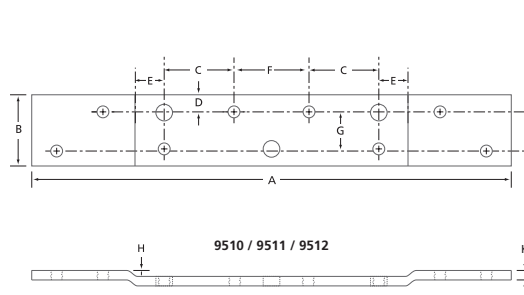
(1) 12/120 : QUANTITY PER BOX / QUANTITY PER CASE.



- Steel filler plate
- ANSI A156.7 template hole pattern
- Holes accommodate #12-24 screws
- Fastening hardware included

MODEL	FINISH	DESCRIPTION	QTY ⁽¹⁾
9515	Zinc plated	Template filler plate for 4 ¹ / ₂ x 1 ¹ / ₂ " (114.3 x 38 mm) hinge leaf	50/150

(1) 50/150 : QUANTITY PER BOX / QUANTITY PER CASE.



MODEL	A	B	C	D	E	F	G	H	K
9510	7 ¹⁵ / ₁₆ (202)	1 ³ / ₁₆ (30)	1 ¹ / ₈ (28.6)	1 ⁷ / ₆₄ (6.7)	1 ⁷ / ₃₂ (13.5)	1 ¹⁵ / ₆₄ (31)	5/8 (15)	3/32 (2.5)	5/32 (4)
9511	7 ¹⁵ / ₁₆ (202)	1 ³ / ₁₆ (30)	1 ¹ / ₈ (28.6)	1 ⁷ / ₆₄ (6.7)	1 ⁷ / ₃₂ (13.5)	1 ¹⁵ / ₆₄ (31)	5/8 (15)	1/16 (1.2)	5/32 (4)
9512	7 ¹⁵ / ₁₆ (202)	1 ³ / ₁₆ (30)	1 ¹ / ₈ (28.6)	1 ⁷ / ₆₄ (6.7)	1 ⁷ / ₃₂ (13.5)	1 ¹⁵ / ₆₄ (31)	5/8 (15)	—	5/32 (4)
9515	4 1/2 (114.3)	1 1/2 (38.1)	1 ¹ / ₈ (28.6)	3/8 (9.5)	33/64 (13.1)	1 ¹⁵ / ₆₄ (31)	1 (25.4)	—	5/32 (4)

DIMENSIONS IN INCHES (MILLIMETRES) AS PER ANSI A156.7



- Non handed
- Surface mounted
- Anti-friction ball bearings for smooth pin rotation
- Precision machined, extruded aluminum
- For aluminum frame doors up to 300 lbs (136 kg)
- 1/8" (3 mm) Vertical door adjustment
- Can accommodate 1/8" (3 mm) recessed doors
- Easy installation

INCLUDES

- (2) Hinges
- (2) #1020S 1/8" (3 mm) shim plates (matching finish)
- (4) Adhesive cover strips (matching finish)
- (1) Hex key
- (12) Tamper resistant fasteners

#1020SC Shim plate pairs available separately.

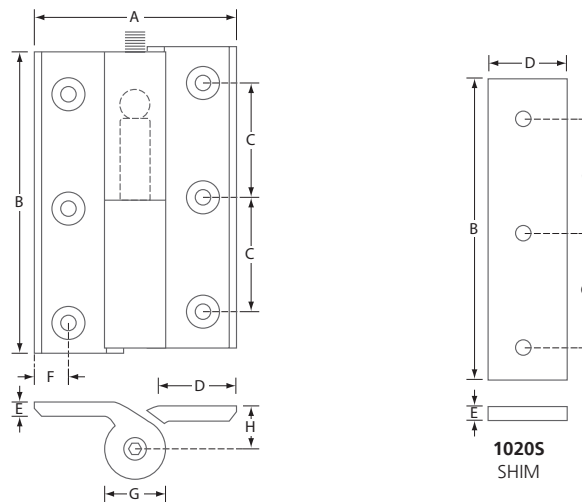
1020	- 28
MODEL	FINISH

MODEL	HINGE SIZE INCHES	MM	GAUGE	HOLES	QTY ¹
1020	3 1/4 x 5	82.6 x 127	0.218	6	8 / 32

(1) 8/32 : QUANTITY PER INNER CARTON / QUANTITY PER CASE. HINGES SOLD IN PAIRS, NOT SOLD INDIVIDUALLY.

20D	28
DARK BRONZE	ALUMINUM

OTHER FINISHES AVAILABLE, MAY REQUIRE SPECIAL ORDER AND/OR ADDITIONAL LEAD TIME.



MODEL	A	B	C	D	E	F	G	H
1020	3 1/4 (82.6)	5 (127)	2 (50.8)	1 (25.4)	7/32 (5.6)	9/16 (14)	1 (25.4)	3/4 (19)
1020S	—	5 (127)	2 (50.8)	1 (25.4)	1/8 (3.2)	7/32 (5.6)	1 (25.4)	—

IN (MM)

