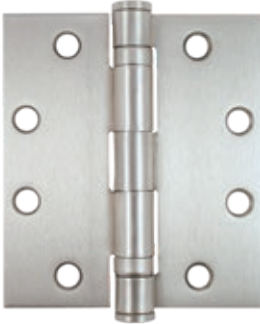


# BB1079/BB1091 SERIES

## BALL BEARING TEMPLATE HINGES



- Standard weight, full mortise
- 5 knuckles, 2 ball bearings
- Steel or stainless steel hinge and pin
- Conforms to ANSI/BHMA A156.1
- ANSI/BHMA A156.7 template hole pattern

- Non-handed
- Flat tips with knock-out bottom
- Wood and undercut machine screws included

### MODELS

BB1079: Steel hinge and pin

BB1091: Stainless steel hinge and pin

### OPTIONS

N: Non-removable pin (NRP)

BB1079 - 454 - 26D - N

MODEL	SIZE	FINISH	OPTION
BB1079	454	26D	N

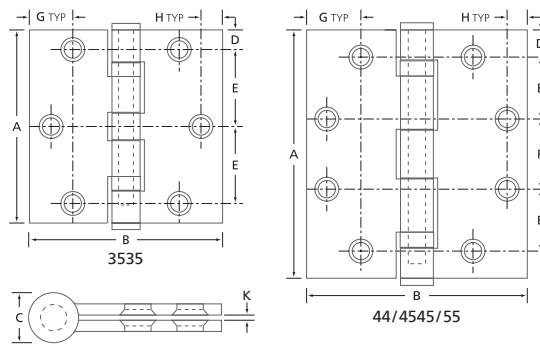
SIZE	INCHES	MM	GAUGE	HOLES	SCREWS INCLUDED		QTY <sup>1</sup>
					MACHINE	WOOD	
3535	3 1/2 x 3 1/2	88.9 x 88.9	0.123	6	#10-24 x 1/2	#9 x 1	3/48
44	4 x 4	101.6 x 101.6	0.130	8	#12-24 x 1/2	#12 x 1 1/4	3/48
4545	4 1/2 x 4 1/2	114.3 x 114.3	0.134	8	#12-24 x 1/2	#12 x 1 1/4	3/48
55	5 x 5	127 x 127	0.146	8	#12-24 x 1/2	#12 x 1 1/4	3/48

(1) 3/48 : QUANTITY PER BOX / QUANTITY PER CASE. HINGES NOT SOLD INDIVIDUALLY.

P	15	26D	3	32D*
PRIME COATED	SATIN NICKEL	SATIN CHROME	POLISHED BRASS	SATIN STAINLESS STEEL

OTHER SIZES AND FINISHES AVAILABLE BY SPECIAL ORDER, PLEASE CONTACT FOR DETAILS.

(\*) 304 STAINLESS STEEL, BB1091-4545 ONLY



SIZE	A	B	C	D	E	F	G	H	K
3535	3 1/2 (88.9)	3 1/2 (88.9)	1/2 (12.7)	23/64 (9.1)	125/64 (35.4)	—	11/16 (17.5)	23/64 (9.1)	1/16 (1.6)
44	4 (101.6)	4 (101.6)	9/16 (14)	1/2 (12.7)	1 (25.5)	31/32 (24.6)	3/4 (19.1)	3/8 (9.5)	1/16 (1.6)
4545	4 1/2 (114.3)	4 1/2 (114.3)	19/32 (15.2)	1/2 (12.7)	1 1/8 (28.6)	1 15/64 (31)	1 (25.4)	3/8 (9.5)	1/16 (1.6)
55	5 (127)	5 (127)	5/8 (15.9)	1/2 (12.7)	1 1/4 (31.8)	1 31/64 (37.7)	1 (25.4)	3/8 (9.5)	1/16 (1.6)

DIMENSIONS IN INCHES (MILLIMETRES) AS PER ANSI A156.7