

- Certifications**
- Conforms to ANSI/BHMA A156.4, Grade 1
 - UL listed
 - ADA compliant, barrier free
 - 10 Year limited warranty

- Power Size**
- Adjustable size 1-6 (preset 3)
- See selection guide for details*

- Body Material**
- Precision cast iron body, painted finish

- Mechanism**
- Hydraulic rack and pinion operation

- Fluid**
- Non-gumming, non-freezing hydraulic fluid

- Adjustments**
- Sweep speed adjustment valve
 - Latching speed adjustment valve
 - Cushioning backcheck adjustment valve

- Cover**
- Full body plastic cover, painted finish

- Handing**
- Non-handed

- Opening**
- 120° maximum
 - 180° maximum with parallel arm

- Mounting**
- Tri-Pack: regular¹, top jamb¹, parallel arm²
 - Maximum reveal: 3" (76 mm)
 - Forearm extensions³ – available
 - Drop plates – available

(1) Arm allows ±15% power adjustment

(2) May reduce spring power efficiency by up to 25%

(3) For reveal up to 5" (127 mm) or 9" (228 mm)

- Hardware**
- Wood screws & self-tapping machine screws
 - Sex nuts & thru-bolts

- Available Arms**
- Extra duty parallel arm
 - Friction hold open arm
 - Heavy duty cushion stop arm, hold open
 - Heavy duty cushion stop arm, no hold open
 - Heavy duty spring stop arm, no hold open

- Finish**
- AL–Aluminum, painted;
 - DU–Dark bronze, painted

Other finishes available by special order

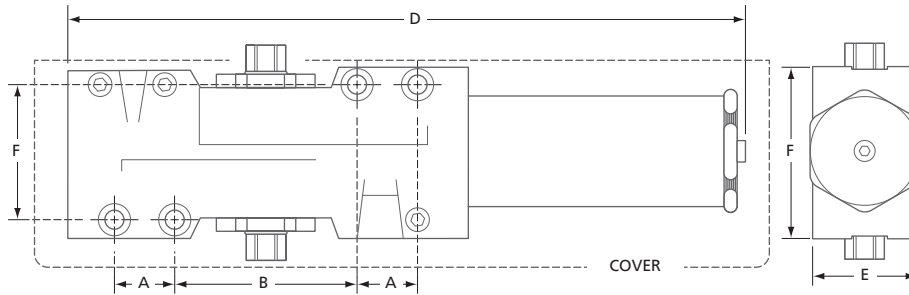
441 BC	-	AL
MODEL		FINISH

SEE SELECTION GUIDE FOR DETAILS

SELECTION GUIDE

MODEL	POWER SIZE	WEIGHT CAPACITY ¹	MAX. DOOR WIDTH ²		BACKCHECK	DELAYED ACTION	FINISH	/CASE
			INTERIOR	EXTERIOR				
441 BC REGULAR ARM							AL, DU	
441 BCC CUSHION-STOP ARM, NO HOLD OPEN		1-6 330 (150)	60 (1524)	48 (1219)	●	—	AL, DU	6
441 BCH CUSHION-STOP ARM, HOLD OPEN*							AL, DU	
441 BCF FRICTION HOLD OPEN ARM*							AL, DU	

CAUTION: ANY DOOR CLOSER INSTALLED AND ADJUSTED BASED ON ADA REDUCED FORCE REQUIREMENTS MAY NOT RELIABLY CLOSE AND LATCH DOOR.
 (1) WEIGHT CAPACITY IN POUNDS (KILOGRAMS) (2) MAXIMUM DOOR WIDTH IN INCHES (MILLIMETRES) (*) NOT FOR USE ON FIRE RATED DOORS



MODEL	A	B	C	D	E	F
441	1 (25)	3 (76)	2¼ (57)	11⅝ (287)	2 (51)	2¾ (70)
441 with cover	1 (25)	3 (76)	2¼ (57)	12¼ (311)	2¼ (57)	3½ (89)

IN (MM)

PARTS & ACCESSORIES



ARM441C
Heavy duty cushion stop arm, no hold open.
Included with 441BCC.



ARM441H
Heavy duty cushion stop arm, hold open.
Not for use on fire rated doors. *Included with 441BCH.*



ARM441E
Parallel arm for extra-duty applications.



ARM441S
Heavy duty spring stop arm, no hold open.



ARM441F
Adjustable friction hold open arm, for standard, top jamb or parallel arm installation. Not for use on fire rated doors.



441LR
Long forearm link for reveal greater than 3" (76) up to 5" (127 mm).

441ELR
Extra long forearm link for reveals up to 5-9" (127-228 mm).



DP441-18
For regular arm installations where the door top rail height is insufficient for direct mounting.



DP441-18G
For top jamb installations where low ceiling clearance prevents direct mounting.



DP441-18PA
For parallel arm installations where the door top rail height is insufficient for direct mounting.



DP441-18TJ
For top jamb installations where the door frame header height is insufficient for direct mounting.



SNB1420
Aluminum sex nut & steel thru-bolt kit (4) for doors 1¾" (44.5 mm) thick.



BHMA
CERTIFIED

G1

UL
LISTED

10
YEAR

- Certifications**
- Certified ANSI/BHMA A156.4, Grade 1
 - UL listed
 - ADA compliant, barrier free
 - 10 Year limited warranty

- Power Size**
- Adjustable size 1-6 (preset 3)

- Body Material**
- Cast aluminum body, painted finish

- Mechanism**
- Hydraulic rack and pinion operation

- Fluid**
- Non-gumming, non-freezing hydraulic fluid

- Adjustments**
- Sweep speed adjustment valve
 - Latching speed adjustment valve
 - Cushioning backcheck adjustment valve
 - Delayed action adjustment valve - option

- Cover**
- Slim plastic cover with pinion cap, painted finish
 - Full body plastic cover, painted finish – available

- Handing**
- Non-handed

- Opening**
- 180° maximum

- Mounting**
- Tri-Pack: regular¹, top jamb¹, parallel arm²
 - Maximum reveal: 3" (76 mm)
 - Drop plates – available

*(1) Arm shoe allows ±7.5% power adjustment
(2) May reduce spring power efficiency by 25%*

- Hardware**
- Wood screws & self-tapping machine screws
 - Sex nuts & thru-bolts – available

- Available Arms**
- Heavy duty arm, friction hold open
 - Heavy duty cushion stop arm, no hold open
 - Heavy duty cushion stop arm, hold open
 - Heavy duty spring cushion stop arm, no hold open

- Finish**
- AL–Aluminum, painted

Other finishes available by special order

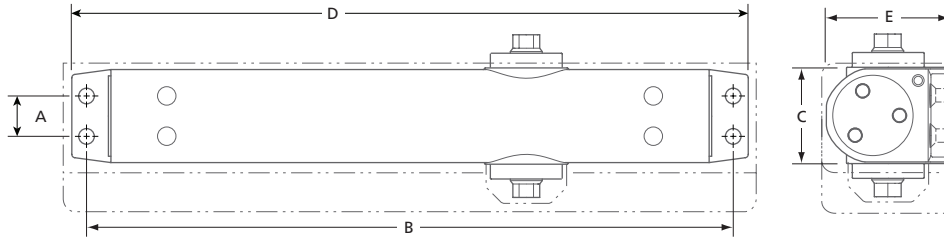
851 BC – AL
MODEL FINISH

SEE SELECTION GUIDE FOR DETAILS

SELECTION GUIDE

MODEL	POWER SIZE	WEIGHT CAPACITY ¹	MAX. DOOR WIDTH ²		BACKCHECK	DELAYED ACTION	FINISH	/CASE
			INTERIOR	EXTERIOR				
851 BC	⑤ 1-6	265 (120)	54 (1372)	48 (1219)	•	—	AL	6

CAUTION: ANY DOOR CLOSER INSTALLED AND ADJUSTED BASED ON ADA REDUCED FORCE REQUIREMENTS MAY NOT RELIABLY CLOSE AND LATCH DOOR.
 (1) WEIGHT CAPACITY IN POUNDS (KILOGRAMS) (2) MAXIMUM DOOR WIDTH IN INCHES (MILLIMETRES)



MODEL	A	B	C	D	E
851 WITH SLIM COVER ¹	$\frac{3}{4}$	$11\frac{15}{16}$	$1\frac{7}{8}$ (47)	$12\frac{3}{4}$ (324)	2 (50.5)
851 WITH FULL BODY COVER ¹	(19)	(303)	3 (76)	13 (330)	$2\frac{1}{16}$ (54.5)

IN (MM) (1) PIVOT CAP AND NARROW COVER INCLUDED; FULL BODY COVER SOLD SEPARATELY

PARTS & ACCESSORIES



FULLCOVER851
 Full body plastic cover.
 LxWxD: 13x3x2 $\frac{1}{16}$ " (330x76x52 mm)



SNB1420
 Sex nut & thru-bolt kit (4) for doors
 1 $\frac{3}{4}$ " (44.5 mm) thick.



SLIMCOVER851
 Slim plastic cover.
 LxWxD: 12 $\frac{3}{4}$ x1 $\frac{7}{8}$ x2" (324x47x50.5 mm)



- Certifications**
- Conforms to ANSI/BHMA A156.4, Grade 1
 - UL listed
 - ADA compliant barrier free model – available
 - 10 Year limited warranty

- Power Size**
- Adjustable size 2-6 (preset 3)
 - Adjustable size 1-4 (preset 2), barrier free

See selection guide for details

- Body Material**
- Cast aluminum body, painted finish

- Mechanism**
- Hydraulic rack and pinion operation

- Fluid**
- Non-gumming, non-freezing hydraulic fluid
 - Operating range of 49° to -35°C (120° to -30°F)

- Adjustments**
- Sweep speed adjustment valve
 - Latching speed adjustment valve
 - Cushioning backcheck adjustment valve
 - Delayed action adjustment valve – option

- Cover**
- Full body plastic cover, painted finish
 - Full body metal cover, plated finish (BP finish only) – option

- Handing**
- Non-handed

- Opening**
- 180° maximum

- Mounting**
- Tri-Pack: regular¹, top jamb¹, parallel arm²
 - Maximum reveal: 2¾" (70 mm)
 - Drop plates – available

(1) Arm shoe allows ±7.5% power adjustment

(2) May reduce spring power efficiency by 25%

- Hardware**
- Wood screws & self-tapping machine screws
 - Sex nuts & thru-bolts

- Available Arms**
- Regular arm with adjustable hold open
 - Heavy duty cushion stop arm, hold open
 - Heavy duty cushion stop arm, no hold open


- Finish**
- AL–Aluminum, painted; BP–Brass, plated; DU–Dark bronze, painted

Other finishes available by special order

1900BF	AL
MODEL	FINISH

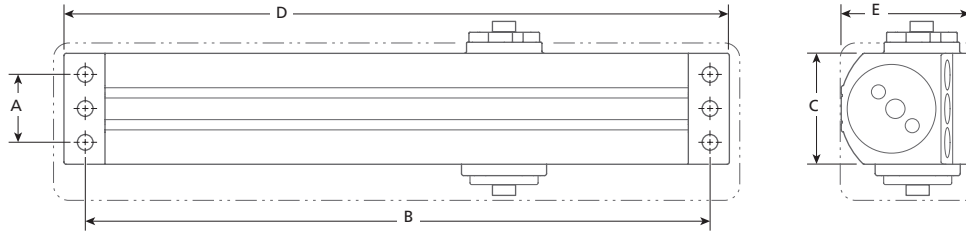
SEE SELECTION GUIDE FOR DETAILS

SELECTION GUIDE

MODEL	POWER SIZE	WEIGHT CAPACITY ¹	MAX. DOOR WIDTH ²		BACKCHECK	DELAYED ACTION	FINISH	/CASE
			INTERIOR	EXTERIOR				
1900	2-6	330 (150)	54 (1372)	48 (1219)	•	—	AL, BP, DU	6
1900 BF 	1-4	265 (120)	48 (1219)	42 (1067)	•	•	AL	6

CAUTION: ANY DOOR CLOSER INSTALLED AND ADJUSTED BASED ON ADA REDUCED FORCE REQUIREMENTS MAY NOT RELIABLY CLOSE AND LATCH DOOR.

(1) WEIGHT CAPACITY IN POUNDS (KILOGRAMS) (2) MAXIMUM DOOR WIDTH IN INCHES (MILLIMETRES)



MODEL	A	B	C	D	E
1900	1 ¹ / ₈ (29)	11 ¹ / ₈ (283)	2 (51)	11 ⁷ / ₈ (302)	2 ³ / ₈ (61)
1900 with cover	1 ¹ / ₈ (29)	11 ¹ / ₈ (283)	3 (76)	12 ¹ / ₈ (308)	2 ¹ / ₂ (64)

IN (MM)

PARTS & ACCESSORIES



ARM1900H
Heavy-duty cushion stop arm, hold open.



ARM1900F
Regular arm with adjustable hold open and parallel arm bracket.



ARM1900C
Heavy-duty cushion stop arm, no hold open.



DP1900
For parallel arm installations where the door top rail height is insufficient for direct mounting.



SNB1420
Sex nut & thru-bolt kit (4) for doors 1³/₄" (44.5mm) thick.

W1900 SERIES

DOOR CLOSER



- Certifications**
- Conforms to ANSI/BHMA A156.4, Grade 1
 - UL listed
 - ADA compliant barrier free model – available
 - 10 Year limited warranty

- Power Size**
- Adjustable size 2-6 (preset 3)
 - Adjustable size 1-4 (preset 2), barrier free

See selection guide for details

- Body Material**
- Cast aluminum body, painted finish

- Mechanism**
- Hydraulic rack and pinion operation

- Fluid**
- Non-gumming, non-freezing hydraulic fluid
 - Operating range of 49° to -35°C (120° to -30°F)

- Adjustments**
- Sweep speed adjustment valve
 - Latching speed adjustment valve
 - Cushioning backcheck adjustment valve
 - Delayed action adjustment valve – option

- Cover**
- Full body plastic cover, painted finish

- Handing**
- Non-handed

- Opening**
- 180° maximum

- Mounting**
- Tri-Pack: regular¹, top jamb¹, parallel arm²
 - Maximum reveal: 2¾" (70 mm)
 - Drop plates – available

(1) Arm shoe allows ±7.5% power adjustment

(2) May reduce spring power efficiency by 25%

- Hardware**
- Wood screws & self-tapping machine screws
 - Sex nuts & thru-bolts

- Available Arms**
- Regular arm with adjustable hold open
 - Heavy duty cushion stop arm, hold open
 - Heavy duty cushion stop arm, no hold open

- Finish**
- AL–Aluminum, painted
 - DU–Dark bronze, painted

Other finishes available by special order

W1900 – AL
MODEL FINISH

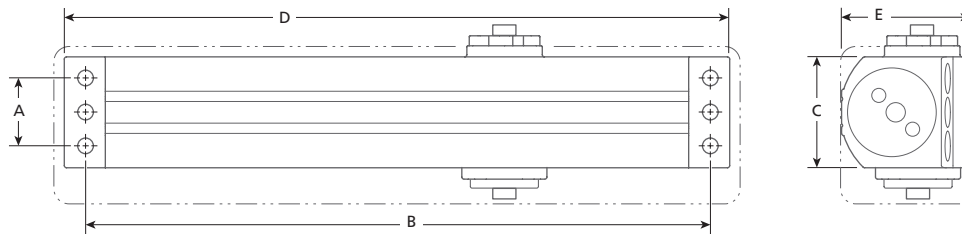
SEE SELECTION GUIDE FOR DETAILS

SELECTION GUIDE

MODEL	POWER SIZE	WEIGHT CAPACITY ¹	MAX. DOOR WIDTH ²		BACKCHECK	DELAYED ACTION	FINISH	/CASE
			INTERIOR	EXTERIOR				
W1900	2-6	330 (150)	54 (330)	48 (1219)	•		AL, DU	6
W1900 BF	Ⓢ 1-4	265 (120)	48 (1219)	42 (1067)	•		AL	6
W1900 BF DA	Ⓢ 1-4	265 (120)	48 (1219)	42 (1067)	•	•	AL	6
W1900XCSA INCLUDES CSAW1900	2-6	330 (150)	54 (330)	48 (1219)	•		AL	4
W1900XCSANHO INCLUDES CSAW1900NHO	2-6	330 (150)	54 (330)	48 (1219)	•		AL	4

CAUTION: ANY DOOR CLOSER INSTALLED AND ADJUSTED BASED ON ADA REDUCED FORCE REQUIREMENTS MAY NOT RELIABLY CLOSE AND LATCH DOOR.

(1) WEIGHT CAPACITY IN POUNDS (KILOGRAMS) (2) MAXIMUM DOOR WIDTH IN INCHES (MILLIMETRES)



MODEL	A	B	C	D	E
W1900	1 ¹ / ₈ (29)	11 ¹ / ₈ (283)	2 (51)	11 ⁷ / ₈ (302)	2 ³ / ₈ (61)
W1900 with cover	1 ¹ / ₈ (29)	11 ¹ / ₈ (283)	3 (76)	12 ¹ / ₈ (308)	2 ¹ / ₂ (64)

IN (MM)

PARTS & ACCESSORIES



CSAW1900
Heavy-duty cushion stop arm, hold open. Not for use on fire rated doors. *Included with W1900XCSA.*



DP1900
For parallel arm installations where the door top rail height is insufficient for direct mounting.



CSANHOW1900
Heavy-duty cushion stop arm, no hold open. *Included with W1900XCSANHO.*



SNB1420
Aluminum sex nut & steel thru-bolt kit (4) for doors 1³/₄" (44.5 mm) thick.



SCSANHOW1900
Heavy-duty cushion spring stop arm, no hold open.



- Certifications**
- UL listed
 - ADA compliant barrier free model –available
 - 5 Year limited warranty

- Power Size**
- Adjustable size 2-5 (preset 3)
 - Adjustable size 1-4 (preset 2), barrier free
- See selection guide for details*

- Body Material**
- Cast aluminum body, painted finish

- Mechanism**
- Hydraulic rack and pinion operation

- Fluid**
- Non-gumming, non-freezing hydraulic fluid

- Adjustments**
- Sweep speed adjustment valve
 - Latching speed adjustment valve
 - Cushioning backcheck adjustment valve

- Cover**
- Low-profile, plastic cover with pinion cap, painted finish

- Handing**
- Non-handed

- Opening**
- 180° maximum

- Mounting**
- Tri-pack: regular¹, top jamb¹ or parallel arm²
 - Maximum reveal: 2¾" (70 mm)
 - Drop plates – available
- (1) Arm shoe allows ±7.5% power adjustment
(2) May reduce spring power efficiency by 25%*

- Hardware**
- Wood screws & self-tapping machine screws
 - Sex nuts & thru-bolts


- Available Arms**
- Regular arm
 - Sliding arm, hold open
 - Sliding arm, no hold open

- Finish**
- AL–Aluminum, painted; BP–Brass, painted; DU–Dark bronze, painted
- Other finishes available by special order*

1700BF	AL
MODEL	FINISH

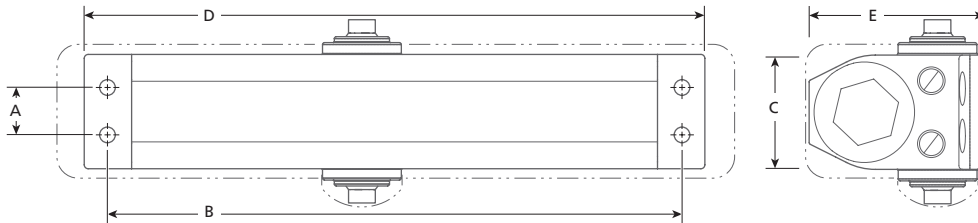
SEE SELECTION GUIDE FOR DETAILS

SELECTION GUIDE

MODEL	POWER SIZE	WEIGHT CAPACITY ¹	MAX. DOOR WIDTH ²		BACKCHECK	DELAYED ACTION	FINISH	/CASE
			INTERIOR	EXTERIOR				
1700	2-5	265 (120)	48 (1219)	42 (1067)	●	—	AL, BP, DU	10
1700 BF 	1-4	190 (86)	42 (1067)	—	●	—	AL, DU	10

CAUTION: ANY DOOR CLOSER INSTALLED AND ADJUSTED BASED ON ADA REDUCED FORCE REQUIREMENTS MAY NOT RELIABLY CLOSE AND LATCH DOOR.

(1) WEIGHT CAPACITY IN POUNDS (KILOGRAMS) (2) MAXIMUM DOOR WIDTH IN INCHES (MILLIMETRES)



MODEL	A	B	C	D	E
1700	$\frac{3}{4}$ (19)	$9\frac{1}{16}$ (230)	$1\frac{3}{4}$ (44.5)	$9\frac{3}{4}$ (248)	$2\frac{7}{8}$ (73)
1700 with cover ¹	$\frac{3}{4}$ (19)	$9\frac{1}{16}$ (230)	$2\frac{1}{16}$ (53)	$10\frac{9}{16}$ (269)	3 (76)

IN (MM) (1) ALL MODELS INCLUDE PINION CAP AND SLIM BODY COVER.

PARTS & ACCESSORIES



DP754
For parallel arm installations where the door top rail height is insufficient for direct mounting.



SNB1420
Sex nut & thru-bolt kit (4) for doors $1\frac{3}{4}$ " (44.5 mm) thick.

W1700 SERIES

DOOR CLOSER



- Certifications**
 - UL listed
 - ADA compliant barrier free model –available
 - 1 Year limited warranty
- Power Size**
 - Adjustable size 2-5 (preset 3)
 - Adjustable size 1-4 (preset 2), barrier free

See selection guide for details
- Body Material**
 - Cast aluminum body, painted finish
- Mechanism**
 - Hydraulic rack and pinion operation
- Fluid**
 - Non-gumming, non-freezing hydraulic fluid
- Adjustments**
 - Sweep speed adjustment valve
 - Latching speed adjustment valve
 - Cushioning backcheck adjustment valve
- Cover**
 - Slim, plastic cover with pinion cap, painted finish
- Handing**
 - Non-handed

- Opening**
 - 180° maximum
- Mounting**
 - Tri-pack: regular¹, top jamb¹ or parallel arm²
 - Maximum reveal: 2¾" (70 mm)
 - Drop plates – available


(1) Arm shoe allows ±7.5% power adjustment
(2) May reduce spring power efficiency by 25%
- Hardware**
 - Wood screws & self-tapping machine screws
 - Sex nuts & thru-bolts
- Available Arms**
 - Regular arm
- Finish**
 - AL–Aluminum, painted;
 - DU–Dark bronze, painted

Other finishes available by special order

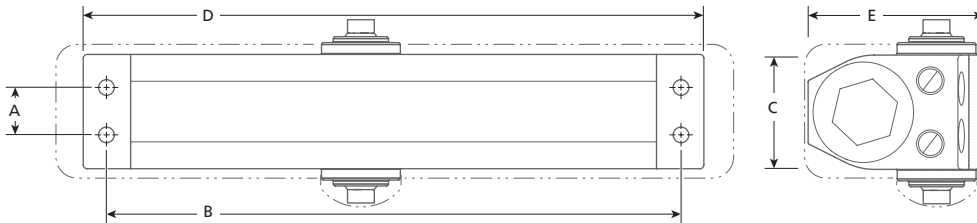
W1700 – AL
MODEL FINISH

SEE SELECTION GUIDE FOR DETAILS

SELECTION GUIDE

MODEL	POWER SIZE	WEIGHT CAPACITY ¹	MAX. DOOR WIDTH ²		BACKCHECK	DELAYED ACTION	FINISH	/CASE
			INTERIOR	EXTERIOR				
W1700	2-5	265 (120)	48 (1219)	42 (1067)	●	—	AL, DU	10
W1700 BF 	1-4	190 (86)	42 (1067)	—	●	—	AL, DU	10

CAUTION: ANY DOOR CLOSER INSTALLED AND ADJUSTED BASED ON ADA REDUCED FORCE REQUIREMENTS MAY NOT RELIABLY CLOSE AND LATCH DOOR.
 (1) WEIGHT CAPACITY IN POUNDS (KILOGRAMS) (2) MAXIMUM DOOR WIDTH IN INCHES (MILLIMETRES)



MODEL	A	B	C	D	E
W1700	$\frac{3}{4}$ (19)	$9\frac{1}{16}$ (230)	$1\frac{3}{4}$ (44.5)	$9\frac{3}{4}$ (248)	$2\frac{7}{8}$ (73)
W1700 with cover ¹	$\frac{3}{4}$ (19)	$9\frac{1}{16}$ (230)	$2\frac{1}{16}$ (53)	$10\frac{9}{16}$ (269)	3 (76)

IN (MM) (1) ALL MODELS INCLUDE PINION CAP AND SLIM BODY COVER.

PARTS & ACCESSORIES



SNB1420
Sex nut & thru-bolt kit (4) for doors $1\frac{3}{4}$ " (44.5 mm) thick.



DP754
For parallel arm installations where the door top rail height is insufficient for direct mounting.



- | | |
|---|---|
| <p>Certifications • UL listed
• 5 Year limited warranty</p> <p>Power Size • Fixed power size 1,2, 3, 4 or 5
<i>See selection guide for details</i></p> <p>Body Material • Cast aluminum alloy, painted finish</p> <p>Mechanism • Hydraulic rack and pinion</p> <p>Fluid • Non-gumming, non-freezing hydraulic fluid</p> <p>Adjustments • Sweep speed valve
• Latching speed valve
• Cushioning backcheck valve – option</p> <p>Cover • Plastic pinion cap, painted finish</p> <p>Handing • Non-handed</p> | <p>Opening • 180° maximum</p> <p>Mounting • Tri-pack: regular¹, top jamb¹ or parallel arm²
• Maximum reveal: 3" (76mm)
• Drop plates – available
<i>(1) Arm shoe allows ±7.5% power adjustment</i>
<i>(2) May reduce spring power efficiency by 25%</i></p> <p>Hardware • Wood & machine screws
• Sex nuts & thru-bolts – available</p> <p>Available Arms • Regular arm</p> <p>Finish AL–Aluminum, painted; BP–Brass, painted; DU–Dark bronze, painted
<i>Other finishes available by special order</i></p> |
|---|---|

754	AL
MODEL	FINISH

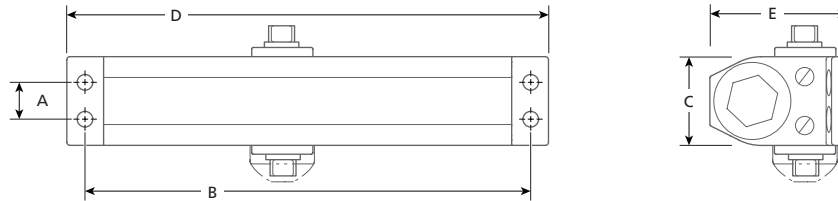
SEE SELECTION GUIDE FOR DETAILS

SELECTION GUIDE

MODEL	POWER SIZE	WEIGHT CAPACITY ¹	MAX. DOOR WIDTH ²		BACKCHECK	DELAYED ACTION	FINISH	/CASE
			INTERIOR	EXTERIOR				
751	1	33–80 (15–36)	32 (813)	—	—	—	AL	10
752	2	55–100 (25–45)	36 (914)	—	—	—	AL	10
753	3	90–145 (40–66)	44 (1118)	—	—	—	AL, DU	10
754	4	125–190 (57–86)	48 (1219)	36 (914)	—	—	AL, DU	10
784					●	—	AL, DU	10
755	5	175–265 (80–120)	52 (1321)	44 (1118)	—	—	AL, BP, DU	10
785					●	—	AL	10

CAUTION: ANY DOOR CLOSER INSTALLED AND ADJUSTED BASED ON ADA REDUCED FORCE REQUIREMENTS MAY NOT RELIABLY CLOSE AND LATCH DOOR.

(1) WEIGHT CAPACITY RANGE IN POUNDS (KILOGRAMS) (2) MAXIMUM DOOR WIDTH IN INCHES (MILLIMETRES)



MODEL	A	B	C	D	E
751	¾ (19)	6½ (165)	1 ¹¹ / ₁₆ (43)	7 ⁷ / ₈ (181)	2 ⁹ / ₁₆ (65)
752/753	¾ (19)	8 ³ / ₁₆ (208)	1¾ (45)	8 ⁷ / ₈ (225)	2 ⁷ / ₈ (73)
754/755 (784/785)	¾ (19)	9 ¹ / ₁₆ (230)	1¾ (45)	9¾ (248)	2 ⁷ / ₈ (73)

IN (MM)

PARTS & ACCESSORIES



DP754
For parallel arm installations where the door top rail height is insufficient for direct mounting.
(Models 754 / 755).



SNB1420
Sex nut & thru-bolt kit (4) for doors 1¾" (44.5 mm) thick.



DPS740AL
Drop plate.



DPN740AL
Drop plate for narrow top rail.

600 SERIES

DOOR CLOSER



- Certifications**
 - UL listed
 - 5 Year limited warranty
- Power Size**
 - Fixed power size 2 or 3

See selection guide for details
- Body Material**
 - Cast aluminum alloy, painted finish
- Mechanism**
 - Hydraulic rack and pinion
- Fluid**
 - Non-gumming hydraulic fluid
- Adjustments**
 - Sweep speed valve
 - Latching speed valve
 - Cushioning backcheck valve – option
- Cover**
 - Plastic pinion cap, painted finish

- Handing**
 - Non-handed
- Opening**
 - 180° maximum
- Mounting**
 - Tri-pack: regular¹, top jamb¹ or parallel arm²
 - Maximum reveal: 1 3/4" (44.5 mm)

(1) Arm shoe allows ±7.5% power adjustment
(2) May reduce spring power efficiency by 25%
- Hardware**
 - Wood & machine screws
- Finish**
 - AL–Aluminum, painted;
 - BP–Brass, plated

Other finishes available by special order

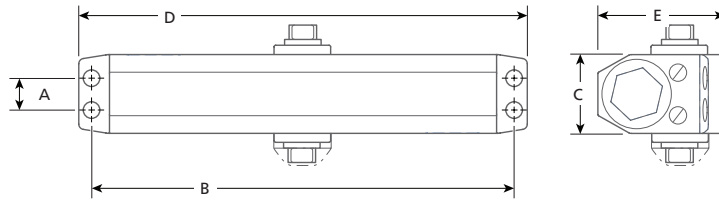
652	AL
MODEL	FINISH

SEE SELECTION GUIDE FOR DETAILS

SELECTION GUIDE

MODEL	POWER SIZE	WEIGHT CAPACITY ¹	MAX. DOOR ²		BACKCHECK	HOLD OPEN	DELAYED ACTION	FINISH	/CASE
			WIDTH	HEIGHT					
652	2	55-95 (25-45)	36 (914)	82 (2100)	—	—	—	AL, BP	10
653	3	85-145 (40-65)	38 (965)	82 (2100)	—	—	—	AL	10

(1) WEIGHT CAPACITY RANGE IN POUNDS (KILOGRAMS) (2) MAXIMUM DOOR WIDTH/HEIGHT IN INCHES (MILLIMETRES)



MODEL	A	B	C	D	E
652	3/4 (19)	6 5/8 (168)	1 23/32 (43.5)	7 5/16 (186)	2 5/8 (67)
653	3/4 (19)	8 1/8 (206)	1 3/4 (45)	8 25/32 (223)	2 27/32 (72)

IN (MM)