

W1900 SERIES

DOOR CLOSER



- Certifications**
- Conforms to ANSI/BHMA A156.4, Grade 1
 - UL listed
 - ADA compliant barrier free model – available
 - 10 Year limited warranty

- Power Size**
- Adjustable size 2-6 (preset 3)
 - Adjustable size 1-4 (preset 2), barrier free

See selection guide for details

- Body Material**
- Cast aluminum body, painted finish

- Mechanism**
- Hydraulic rack and pinion operation

- Fluid**
- Non-gumming, non-freezing hydraulic fluid
 - Operating range of 49° to -35°C (120° to -30°F)

- Adjustments**
- Sweep speed adjustment valve
 - Latching speed adjustment valve
 - Cushioning backcheck adjustment valve
 - Delayed action adjustment valve – option

- Cover**
- Full body plastic cover, painted finish

- Handing**
- Non-handed

- Opening**
- 180° maximum

- Mounting**
- Tri-Pack: regular¹, top jamb¹, parallel arm²
 - Maximum reveal: 2¾" (70 mm)
 - Drop plates – available

(1) Arm shoe allows ±7.5% power adjustment

(2) May reduce spring power efficiency by 25%

- Hardware**
- Wood screws & self-tapping machine screws
 - Sex nuts & thru-bolts

- Available Arms**
- Regular arm with adjustable hold open
 - Heavy duty cushion stop arm, hold open
 - Heavy duty cushion stop arm, no hold open

- Finish**
- AL–Aluminum, painted
 - DU–Dark bronze, painted

Other finishes available by special order

W1900 – AL
MODEL FINISH

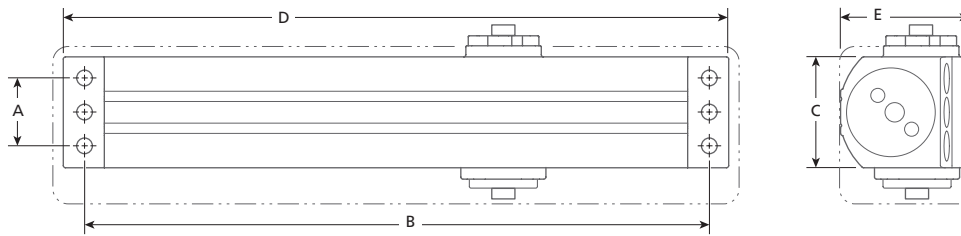
SEE SELECTION GUIDE FOR DETAILS

SELECTION GUIDE

MODEL	POWER SIZE	WEIGHT CAPACITY ¹	MAX. DOOR WIDTH ²		BACKCHECK	DELAYED ACTION	FINISH	/CASE
			INTERIOR	EXTERIOR				
W1900	2-6	330 (150)	54 (330)	48 (1219)	•		AL, DU	6
W1900 BF	Ⓢ 1-4	265 (120)	48 (1219)	42 (1067)	•		AL	6
W1900 BF DA	Ⓢ 1-4	265 (120)	48 (1219)	42 (1067)	•	•	AL	6
W1900XCSA INCLUDES CSAW1900	2-6	330 (150)	54 (330)	48 (1219)	•		AL	4
W1900XCSANHO INCLUDES CSAW1900NHO	2-6	330 (150)	54 (330)	48 (1219)	•		AL	4

CAUTION: ANY DOOR CLOSER INSTALLED AND ADJUSTED BASED ON ADA REDUCED FORCE REQUIREMENTS MAY NOT RELIABLY CLOSE AND LATCH DOOR.

(1) WEIGHT CAPACITY IN POUNDS (KILOGRAMS) (2) MAXIMUM DOOR WIDTH IN INCHES (MILLIMETRES)



MODEL	A	B	C	D	E
W1900	1 ¹ / ₈ (29)	11 ¹ / ₈ (283)	2 (51)	11 ⁷ / ₈ (302)	2 ³ / ₈ (61)
W1900 with cover	1 ¹ / ₈ (29)	11 ¹ / ₈ (283)	3 (76)	12 ¹ / ₈ (308)	2 ¹ / ₂ (64)

IN (MM)

PARTS & ACCESSORIES



CSAW1900
Heavy-duty cushion stop arm, hold open. Not for use on fire rated doors. *Included with W1900XCSA.*



DP1900
For parallel arm installations where the door top rail height is insufficient for direct mounting.



CSANHOW1900
Heavy-duty cushion stop arm, no hold open. *Included with W1900XCSANHO.*



SNB1420
Aluminum sex nut & steel thru-bolt kit (4) for doors 1³/₄" (44.5 mm) thick.



SCSANHOW1900
Heavy-duty cushion spring stop arm, no hold open.