



- Certifications**
- Conforms to ANSI/BHMA A156.4, Grade 1
 - UL listed
 - ADA compliant barrier free model – available
 - 10 Year limited warranty

- Power Size**
- Adjustable size 2-6 (preset 3)
 - Adjustable size 1-4 (preset 2), barrier free

See selection guide for details

- Body Material**
- Cast aluminum body, painted finish

- Mechanism**
- Hydraulic rack and pinion operation

- Fluid**
- Non-gumming, non-freezing hydraulic fluid
 - Operating range of 49° to -35° C (120° to -30° F)

- Adjustments**
- Sweep speed adjustment valve
 - Latching speed adjustment valve
 - Cushioning backcheck adjustment valve
 - Delayed action adjustment valve – option

- Cover**
- Full body plastic cover, painted finish
 - Full body metal cover, plated finish (BP finish only) – option

- Handing**
- Non-handed

- Opening**
- 180° maximum

- Mounting**
- Tri-Pack: regular¹, top jamb¹, parallel arm²
 - Maximum reveal: 2¾" (70 mm)
 - Drop plates – available

(1) Arm shoe allows ±7.5% power adjustment

(2) May reduce spring power efficiency by 25%

- Hardware**
- Wood screws & self-tapping machine screws
 - Sex nuts & thru-bolts

- Available Arms**
- Regular arm with adjustable hold open
 - Heavy duty cushion stop arm, hold open
 - Heavy duty cushion stop arm, no hold open


- Finish**
- AL–Aluminum, painted; BP–Brass, plated; DU–Dark bronze, painted

Other finishes available by special order

| | |
|--------|--------|
| 1900BF | AL |
| MODEL | FINISH |

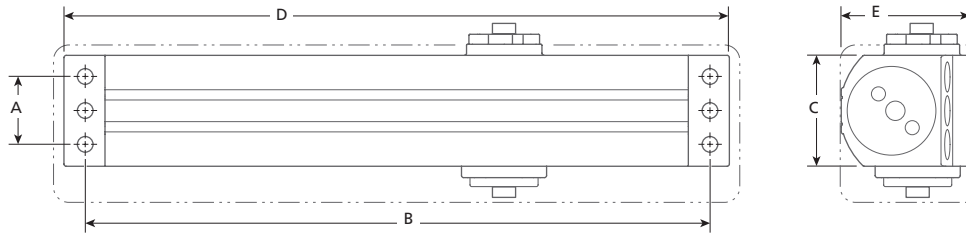
SEE SELECTION GUIDE FOR DETAILS

SELECTION GUIDE

| MODEL | POWER SIZE | WEIGHT CAPACITY ¹ | MAX. DOOR WIDTH ² | | BACKCHECK | DELAYED ACTION | FINISH | /CASE |
|---|------------|------------------------------|------------------------------|--------------|-----------|----------------|------------|-------|
| | | | INTERIOR | EXTERIOR | | | | |
| 1900 | 2-6 | 330 (150) | 54 (1372) | 48 (1219) | • | — | AL, BP, DU | 6 |
| 1900 BF  | 1-4 | 265 (120) | 48 (1219) | 42 (1067) | • | • | AL | 6 |

CAUTION: ANY DOOR CLOSER INSTALLED AND ADJUSTED BASED ON ADA REDUCED FORCE REQUIREMENTS MAY NOT RELIABLY CLOSE AND LATCH DOOR.

(1) WEIGHT CAPACITY IN POUNDS (KILOGRAMS) (2) MAXIMUM DOOR WIDTH IN INCHES (MILLIMETRES)



| MODEL | A | B | C | D | E |
|-----------------|---------------------------------------|---|-----------|---|---------------------------------------|
| 1900 | 1 ¹ / ₈ (29) | 11 ¹ / ₈ (283) | 2 (51) | 11 ⁷ / ₈ (302) | 2 ³ / ₈ (61) |
| 1900 with cover | 1 ¹ / ₈ (29) | 11 ¹ / ₈ (283) | 3 (76) | 12 ¹ / ₈ (308) | 2 ¹ / ₂ (64) |

IN (MM)

PARTS & ACCESSORIES



ARM1900H
Heavy-duty cushion stop arm, hold open.



ARM1900F
Regular arm with adjustable hold open and parallel arm bracket.



ARM1900C
Heavy-duty cushion stop arm, no hold open.



DP1900
For parallel arm installations where the door top rail height is insufficient for direct mounting.



SNB1420
Sex nut & thru-bolt kit (4) for doors 1³/₄" (44.5mm) thick.